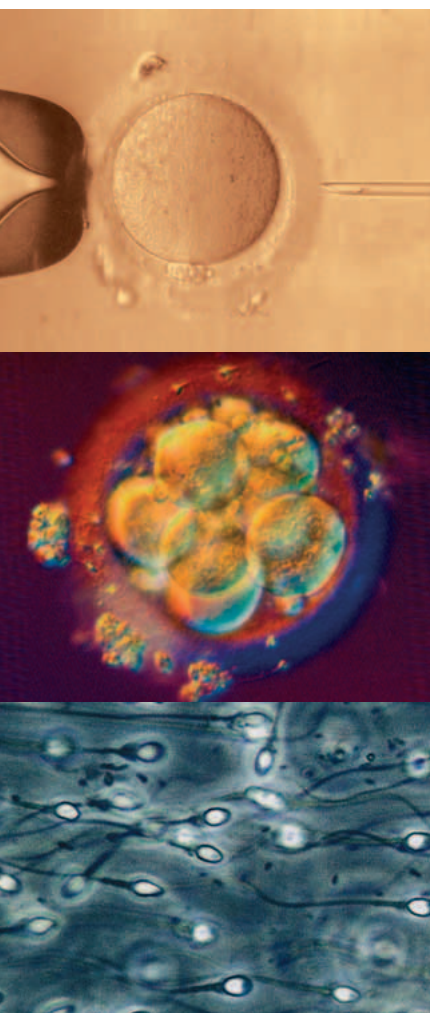


Journal für

# Reproduktionsmedizin und Endokrinologie

– Journal of Reproductive Medicine and Endocrinology –

Andrologie • Embryologie & Biologie • Endokrinologie • Ethik & Recht • Genetik  
Gynäkologie • Kontrazeption • Psychosomatik • Reproduktionsmedizin • Urologie



## DIR Annual 2013 - German IVF-Registry

Blumenauer V, Czeromin U, Fiedler K, Gnoth C, Happel L

Krüssel JS, Kupka MS, Tandler-Schneider A

*J. Reproduktionsmed. Endokrinol* 2014; 11 (5-6)

236-273

[www.kup.at/repromedizin](http://www.kup.at/repromedizin)

**Online-Datenbank mit Autoren- und Stichwortsuche**

**Offizielles Organ:** AGRBM, BRZ, DIR, DVR, DGA, DGGEF, DGRM, EFA, OEGRM, SRBM/DGE

Indexed in EMBASE/Excerpta Medica

Member of the



Krause & Pachernegg GmbH, Verlag für Medizin und Wirtschaft, A-3003 Gablitz

## Mitteilungen aus der Redaktion: Die meistgelesenen Artikel

### Journal für Urologie und Urogynäkologie



### Journal für Reproduktionsmedizin und Endokrinologie



### Speculum



### Journal für Gynäkologische Endokrinologie



■ Finden Sie in der Rubrik „Tipps und Tricks im Gyn-Ultraschall“ aktuelle Fallbeispiele von Univ.Prof. Dr. Christoph Brezinka, Innsbruck.



# D·I·R Contents

DEUTSCHES IVF REGISTRIER

<b>Preface</b>	
<b>D-I-R Annual 2013 – German IVF-Registry</b>	<b>237</b>
V. Blumenauer, U. Czeromin, K. Fiedler, C. Gnoth, L. Happel, J.-S. Krüssel, M.S. Kupka, A. Tandler-Schneider	
<b>Responsible for this Edition</b>	
<b>238</b>	
<b>Tables</b>	
<b>Outcome of ART 2013</b>	<b>239</b>
<b>Registry Participants 1982–2013</b>	<b>239</b>
<b>Total Number of Treatment Cycles 2013</b>	<b>240</b>
<b>Number of Ovum Pick-up Cycles (OPC) 1982–2013</b>	<b>240</b>
<b>Number of Treatments 1982–2013</b>	<b>241</b>
<b>Summary of Statistics in Brief 2013</b>	<b>241</b>
<b>Summary of Statistics in Brief 2012</b>	<b>241</b>
<b>D-I-R Statistics in Brief 2013</b>	<b>242</b>
<b>D-I-R Statistics in Brief 2012</b>	<b>243</b>
<b>Clinical Pregnancies (CP), Miscarriages (MISC), Ectopic Pregnancies (EP), and Still Births (SB) 2012</b>	<b>244</b>
<b>Multiple Births 2012</b>	<b>245</b>
<b>Births as a Function of Number of Embryos Transferred and Age Groups 2000–2012</b>	<b>246</b>
<b>Births as a Function of Number of Embryos Transferred and Treatment Method 2000–2012</b>	<b>247</b>
<b>Fertilisation Rate 2013</b>	<b>248</b>
<b>Distribution of Indications 2013</b>	<b>249</b>
<b>IVF and ICSI – Results 2013</b>	<b>250</b>
<b>TESE and Cryo Transfer – Results 2013</b>	<b>251</b>
<b>Cryo Transfer – Results 2013</b>	<b>251</b>
<b>Outcome (Clinical Pregnancy [CP]) as a Function of Female Age 2013 – IVF</b>	<b>252</b>
<b>Outcome (Clinical Pregnancy [CP]) as a Function of Female Age 2013 – ICSI</b>	<b>253</b>
<b>Clinical Pregnancies (CP)/ET as a Function of the Number of Embryos Transferred and Age Groups 2013</b>	<b>254</b>
<b>Clinical Pregnancies (CP)/Fresh Transfer as a Function of Embryo Quality 2013</b>	<b>255</b>
<b>Clinical Pregnancies (CP)/Frozen Transfer as a Function of Embryo Quality 2013</b>	<b>255</b>
<b>Miscarriage (MISC) Rates as a Function of Female Age and Number of Embryos Transferred 2013</b>	<b>256</b>
<b>Clinical Pregnancy Rate (CPR) as a Function of the Stimulation Protocol 2013</b>	<b>257</b>
<b>Mean Age for Women and Men 1997–2013</b>	<b>258</b>
<b>Duration of Unwanted Childlessness Prior to First Treatment 1997–2013</b>	<b>259</b>
<b>Number of all Treatment Cycles per Woman 1997–2013</b>	<b>259</b>
<b>Children Born 1997–2013 – IVF, ICSI, IVF/ICSI</b>	<b>260</b>
<b>Children Born 1997–2013 – Total (IVF, ICSI, IVF/ICSI, Cryo Transfer)</b>	<b>261</b>
<b>Children as a Function of Week of Gestation (WoG) and Birth Weight (BW) 2012</b>	<b>262</b>
<b>Complications as a Function of Ovum Pick-up (OPU) 2013</b>	<b>264</b>
<b>Ovarian Hyperstimulation Syndrome (OHSS) as a Function of the Stimulation Protocol</b>	<b>265</b>
<b>List of D-I-R Registry Participants 2013</b>	
<b>266</b>	
<b>Sponsors</b>	
<b>273</b>	



# D·I·R Annual 2013 – The German IVF-Registry

V. Blumenauer, U. Czeromin, K. Fiedler, C. Gnoth, L. Happel, J.-S. Krüssel, M.S. Kupka, A. Tandler-Schneider

## Preface

It is our great pleasure to present the annual report of the data collected by the German IVF-Registry. The Registry looks back onto more than 30 years of data collection, extraction, and evaluation.

The great advantage of the German IVF-Registry is the electronic data collection for each initiated treatment cycle since 1996. Meanwhile, more than 1.2 million ART cycles have been documented in the database. The prospective documentation as well as the cycle by cycle data collection are of particular value.

In 2013, 130 of the 131 centers organized in the association “D·I·R” had reported their data to the German IVF-Registry by September 18, 2014.

84,051 cycles have been documented. A total of 51,242 women were treated in 2013, resulting in a mean of 1.64 cycles per woman. We are happy to note that despite the grave changes in reimbursement regulations, the number of treatment cycles has increased steadily again.

Over all the years, an increase in the pregnancy rate (PR) has been achieved. In 2013, the CPR/ET for IVF treatments was 32.76%; 29.96% after ICSI, and after “Cryo transfer” (frozen-thawed transfer, mostly in the 2-PN stage) 22.19%. These data demonstrate the high quality of reproductive medicine in Germany, arriving at impressive results despite the restrictive legislation: in accordance with the “Embryo Protection Act“ of 1990, the elective single embryo transfer (eSET) is forbidden in Germany. Egg donation is prohibited as well. Cryopreservation is allowed but usually only of 2-PN stage oocytes. Yet the regulation that only a maximum of three embryos may be transferred has certainly led to positive effects. Due to the increasing quality of stimulation, improved oocyte treatment, and changes in transfer technology, the number of transferred embryos has decreased by 20% in fresh cycles since 1997. By transferring no more than an average of 1.87 embryos in fresh cycles, the doctors for reproductive medicine in Germany have continued to adhere to their responsible approach to-

wards the reduction of multiples! The number of twins was cut back from 1,914 in the year 2012 to 1,487 in 2013; the number of triplets from 61 to 56. This development certainly is among the Registry’s many merits and it will continue to vigorously pursue and support quality assurance of reproductive medicine in Germany.

The results of the comprehensive data collection in the German IVF-Registry and its reports have been cited in numerous scientific publications, nationally as well as internationally, lending support and impetus to scientific research.

They have furthermore contributed to the continuous improvement of quality within the German centers for reproductive medicine. Medical doctors, biologists, and patients alike have benefited from the tedious work necessary to collect, export and evaluate as well as publish the data. Therefore, we express our gratitude to all involved:

Thank you and keep up the good work!

*Prof. Dr. med. Jan Krüssel*

*Dr. med. Ute Czeromin  
Chairwoman*

*Dr. med. Andreas Tandler-Schneider*



## Responsible for this Edition

### Deutsches IVF-Register e. V. German IVF Registry

#### Members of the Board

Dr. med. U. Czeromin (Chairwoman 2014)  
Prof. Dr. med. J.-S. Krüssel  
Dr. med. Andreas Tandler-Schneider  
(Member of the Board 2014)

#### Curators

Dipl.-Biol. V. Blumenauer  
Dr. med. K. Fiedler  
PD Dr. med. C. Gnoth  
Prof. Dr. med. M. Kupka  
Dr. med. L. Happel

#### Past Chairmen

Dr. med. Klaus Bühler (2007–2014)  
Prof. Dr. med. R. Felberbaum (1995–2007)  
Prof. Dr. med. H.-K. Rjosk (1992–1995)  
Prof. Dr. med. F. Lehmann (1982–1992)

#### D·I·R Office

Monika Uszkoreit · MRU-Consulting GbR  
Mommsenstr. 34, 10629 Berlin  
Fon +49 30 39 800 743  
E-Mail:  
d.i.r.geschaeftsstelle@mru-consulting.de  
Web: [www.deutsches-ivf-register.de](http://www.deutsches-ivf-register.de)

#### D·I·R-Data Management

W&A – Weise & Associates consulting &  
technology GmbH  
Fon +49 211 522948 - 10  
Fax +49 211 522948 - 11  
E-Mail [info@weise-associates.de](mailto:info@weise-associates.de)  
Web: [www.weise-associates.de](http://www.weise-associates.de)  
Contact:  
Stefan Fitzthum, Manager Customer Care  
and Markus Kimmel, Kimmelnet  
Mobile: +49 157 383 261 93  
E-Mail: [mmk@kimmelnet.de](mailto:mmk@kimmelnet.de)  
Web: [www.kimmelnet.de](http://www.kimmelnet.de)

#### Design and Layout

a.umi design etc.  
Dipl.-Des. Soo-Hee Kim  
Fon +49 176 1250 6007  
E-Mail: [mail@a-umi.com](mailto:mail@a-umi.com)

# D-I-R Annual 2013 – Tables



## Outcome of ART 2013

Centers for IVF-, ICSI-, and Cryo Transfer Treatments

<b>Members of the German IVF-Registry 2013</b>	<b>n = 131</b>
Registry Participants 2013	n = 130
Data Received by Deadline Sep 18 2014	n = 130
Documented Treatment Cycles	n = 84,051 (100.00 %)
Plausible	n = 80,955 (96.32 %)
Prospective (all Cycles)	n = 69,441 (85.78 %)
Prospective (IVF, ICSI, IVF/ICSI)	n = 45,375 (82.63 %)
Number of Women Treated*	n = 51,242
<b>Mean Number of Treatment Cycles per Woman</b>	<b>1.64</b>

## Registry Participants 1982 – 2013

IVF-, ICSI- and Cryo Transfer Treatments



	1982	1986	1990	[ ... ]	2003	2004	2005	2006	2007	2008	2009	2010	2011	2012	2013
IVF	5	28	53	<i>For values from 1991 to 2002 see www.deutsches-ivf- register.de</i>	114	118	117	120	118	117	119	121	124	117	128
ICSI	0	0	0		116	120	117	120	118	120	119	124	128	120	129
Cryo	0	0	0		101	112	109	109	112	112	117	120	125	119	128
<b>Total</b>	<b>5</b>	<b>28</b>	<b>53</b>		<b>116</b>	<b>120</b>	<b>117</b>	<b>121</b>	<b>118</b>	<b>120</b>	<b>121</b>	<b>124</b>	<b>128</b>	<b>120</b>	<b>129**</b>

\*) Base quantity: Total number of women, including implausible treatment cycles

\*\*\*) 1 Member did not export the 2013 data. Another center had not recorded their cycles for 2013.

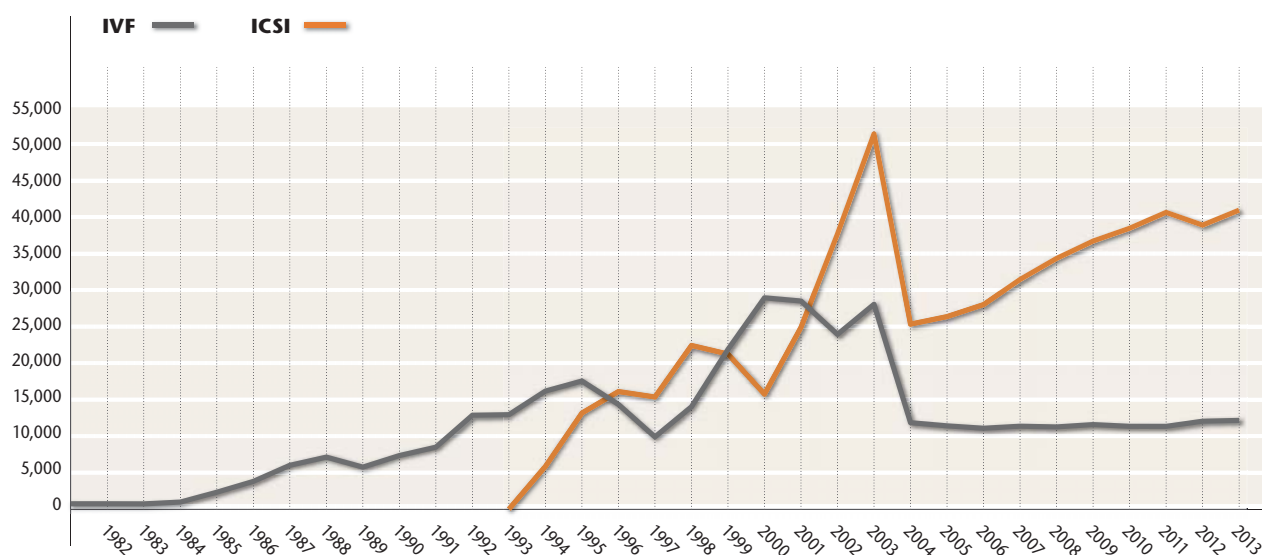
# Total Number of Treatment Cycles 2013

IVF, ICSI, IVF/ICSI, Cryo Transfer – Prospective Data

	IVF	ICSI	IVF/ICSI	Cryo Transfer	No Treatment	Total
n	10,053	34,376	946	19,429	4,637	<b>69,441</b>
%	14.48	49.50	1.36	27.98	6.68	<b>100.00</b>

# Number of Ovum Pick-up Cycles (OPU) 1982–2013

IVF, ICSI\* – Prospective and Retrospective Data



	1982	1986	1990	[ ... ]	2003	2004	2005	2006	2007	2008	2009	2010	2011	2012***	2013
IVF	742	3,806	7,343	<i>For values from 1991 to 2002 see <a href="http://www.deutsches-ivf-register.de">www.deutsches-ivf-register.de</a></i>	28,058	11,848	11,410	11,082	11,362	11,264	11,585	11,346	11,341	12,047	12,156
ICSI					51,389	25,339	26,370	28,015	31,452	34,333	36,712	38,463	40,641	38,897	40,952
<b>Total**</b>	<b>742</b>	<b>3,806</b>	<b>7,343</b>		<b>80,434</b>	<b>37,633</b>	<b>38,382</b>	<b>39,769</b>	<b>43,612</b>	<b>46,431</b>	<b>49,170</b>	<b>50,798</b>	<b>53,076</b>	<b>51,958</b>	<b>54,237</b>

\*) OPU's leading to an IVF- and/or ICSI oocyte treatment  
 \*\*) In each case, "Total" also contains values for IVF/ICSI. For 2013 e.g. 1,129 OPU's  
 \*\*\*) Starting in 2012, based on registry participants 2012 ff.



# Number of Treatments 1982 – 2013

IVF, ICSI, IVF/ICSI, Cryo Transfer – Plausible Data

	1982	1986	1990	[ ... ]	2003	2004	2005	2006	2007	2008	2009	2010	2011	2012***	2013
IVF	742	3,806	7,343	For values from 1991 to 2002 see www.deutsches-ivf-register.de	28,058	11,848	11,098	11,082	11,362	11,264	11,585	11,346	11,341	12,047	12,156
ICSI					51,389	25,339	25,532	28,015	31,452	34,333	36,712	38,463	40,641	38,897	40,952
IVF/ICSI					987	446	590	672	798	834	873	989	1,094	1,014	1,129
Cryo					14,265	16,883	14,471	14,926	16,566	17,646	17,866	17,969	19,228	19,293	20,365
None*					11,133	4,928	4,539	4,600	5,137	5,825	5,946	6,289	6,618	6,117	6,353
<b>Total**</b>	<b>742</b>	<b>4,201</b>	<b>8,653</b>		<b>105,854</b>	<b>59,448</b>	<b>56,232</b>	<b>59,295</b>	<b>65,316</b>	<b>69,902</b>	<b>72,984</b>	<b>75,056</b>	<b>78,922</b>	<b>77,368</b>	<b>80,955</b>

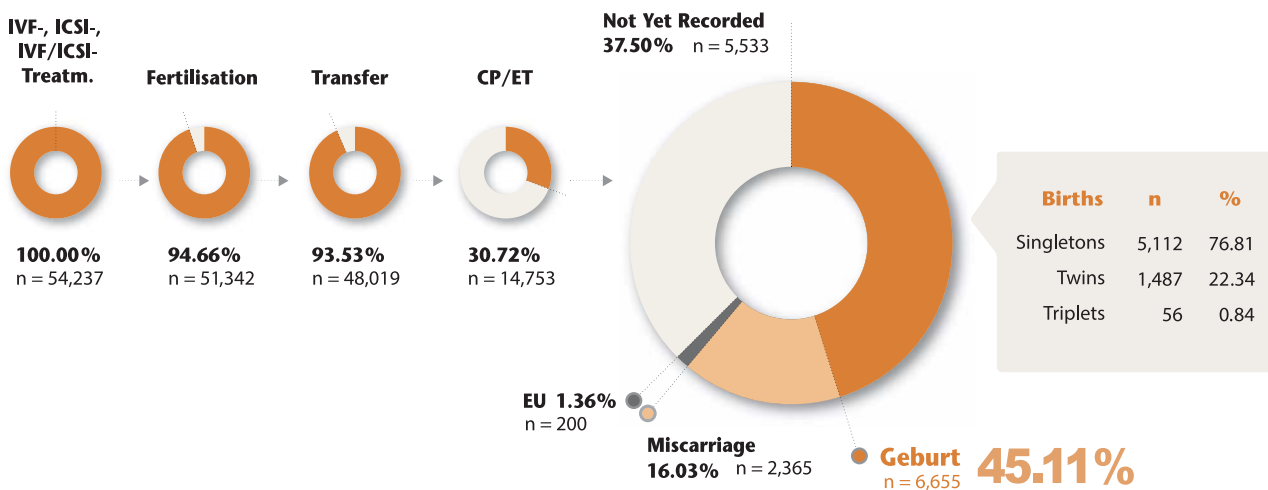
From 1999 on each initiated cycle is documented.

\*) No treatment: treatments aborted prior to oocyte culture  
 \*\*) "Total" may contain GIFT cases. Documentation has been neglected since 2005 due to lack of statistical relevance  
 \*\*\*) Starting in 2012, based on registry participants 2012 ff. The total for the year 2010 was corrected

## Summary of Statistics in Brief 2013 – CoD Sep 18 2014



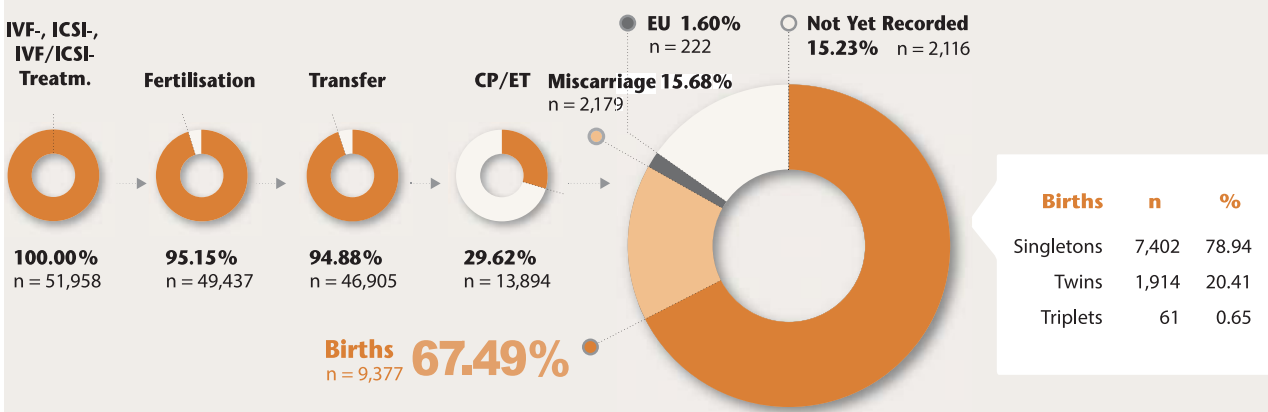
IVF, ICSI and IVF/ICSI – Prospective and Retrospective Data



## Summary of Statistics in Brief 2012 – CoD Sep 18 2014



IVF, ICSI and IVF/ICSI – Prospective and Retrospective Data



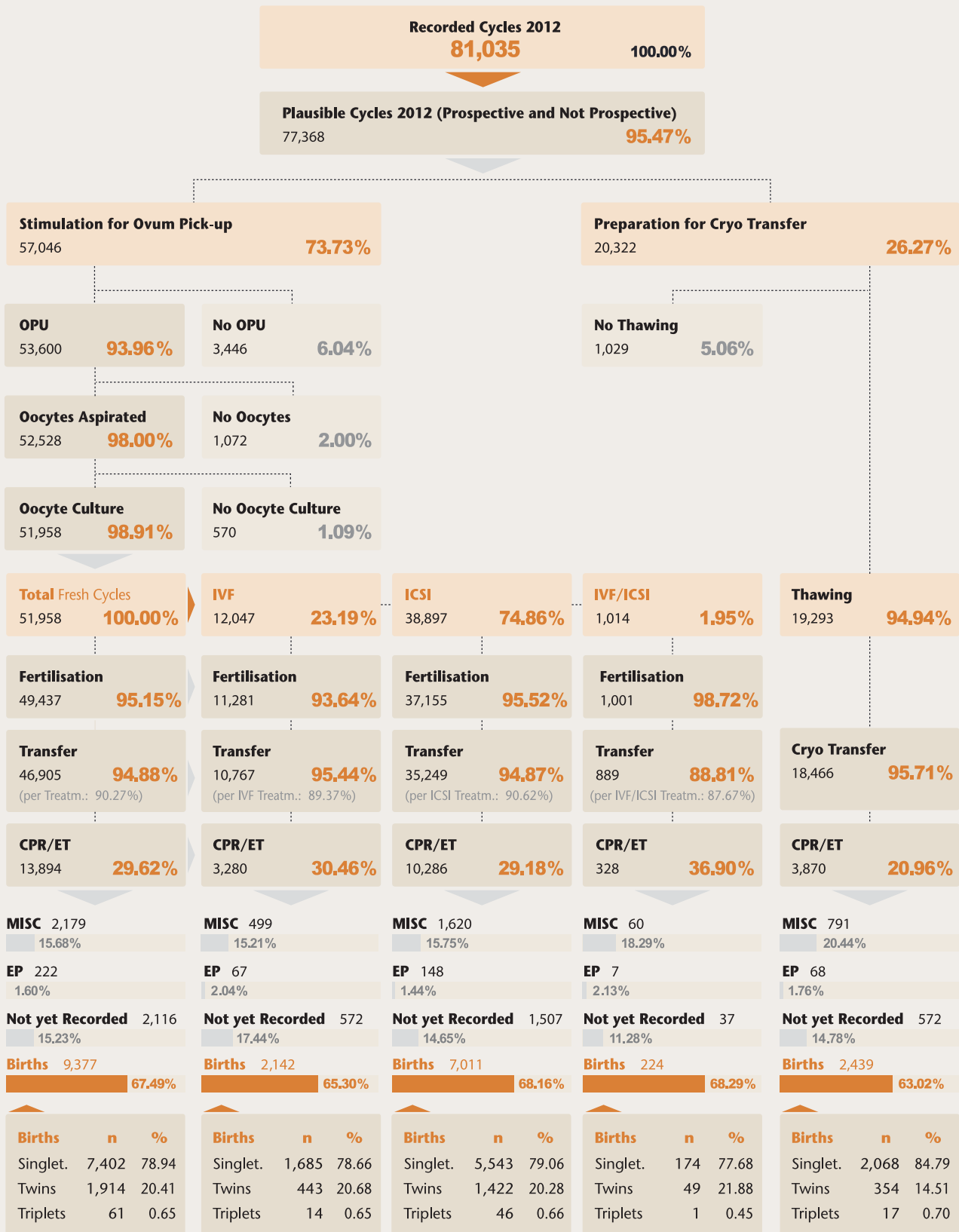






# D-I-R Statistics in Brief 2012 – CoD Sep 18 2014

German IVF Registry



# Clinical Pregnancies (CP), Miscarriages (MISC), Ectopic Pregnancies (EP), and Still Births (SB) 2012

Prospective and Retrospective Data

Birth Rate/Transfer for patients with two embryos transferred and a surplus of at least two 2-PN-stage embryos:  
 IVF 22.04%, ICSI 22.00%, IVF/ICSI 25.36%

	IVF		ICSI		IVF/ICSI		Cryo Transfer	
	n	%	n	%	n	%	n	%
Treatment Cycles	12,047		38,897		1,014		19,293	
Clinical Pregnancies	3,280	100.00	10,286	100.00	328	100.00	3,870	100.00
No Information	572	17.44	1,507	14.65	37	11.28	572	14.78
Live Births	2,142	65.30	7,011	68.16	224	68.29	2,439	63.02
Miscarriages	499	15.21	1,620	15.75	60	18.29	791	20.44
Induced Abort. + Fetal Reduc.*	35 (50)	1.07	155 (243)	1.51	6 (7)	1.83	58 (80)	1.50
Ectopic Pregnancies	67	2.04	148	1.44	7	2.13	68	1.76
Children	2,613		8,525		275		2,827	
Still Births**	18	0.55	38	0.37	4	1.22	7	0.18
Malformations	26	0.79	82	0.80	6	1.83	44	1.14
Baby-Take-Home-Rate***		17.78		18.02		22.09		12.58
		18.67 <sup>1</sup>		18.75 <sup>1</sup>		22.93 <sup>1</sup>		12.96 <sup>1</sup>
		20.88 <sup>2</sup>		20.66 <sup>2</sup>		24.56 <sup>2</sup>		14.44 <sup>2</sup>

\*) Number of cycles in which an induced abortion was documented. A more detailed differentiation cannot be supplied at this time. The brackets contain the number of embryos

\*\*) Number of still births in relation to the number of children born

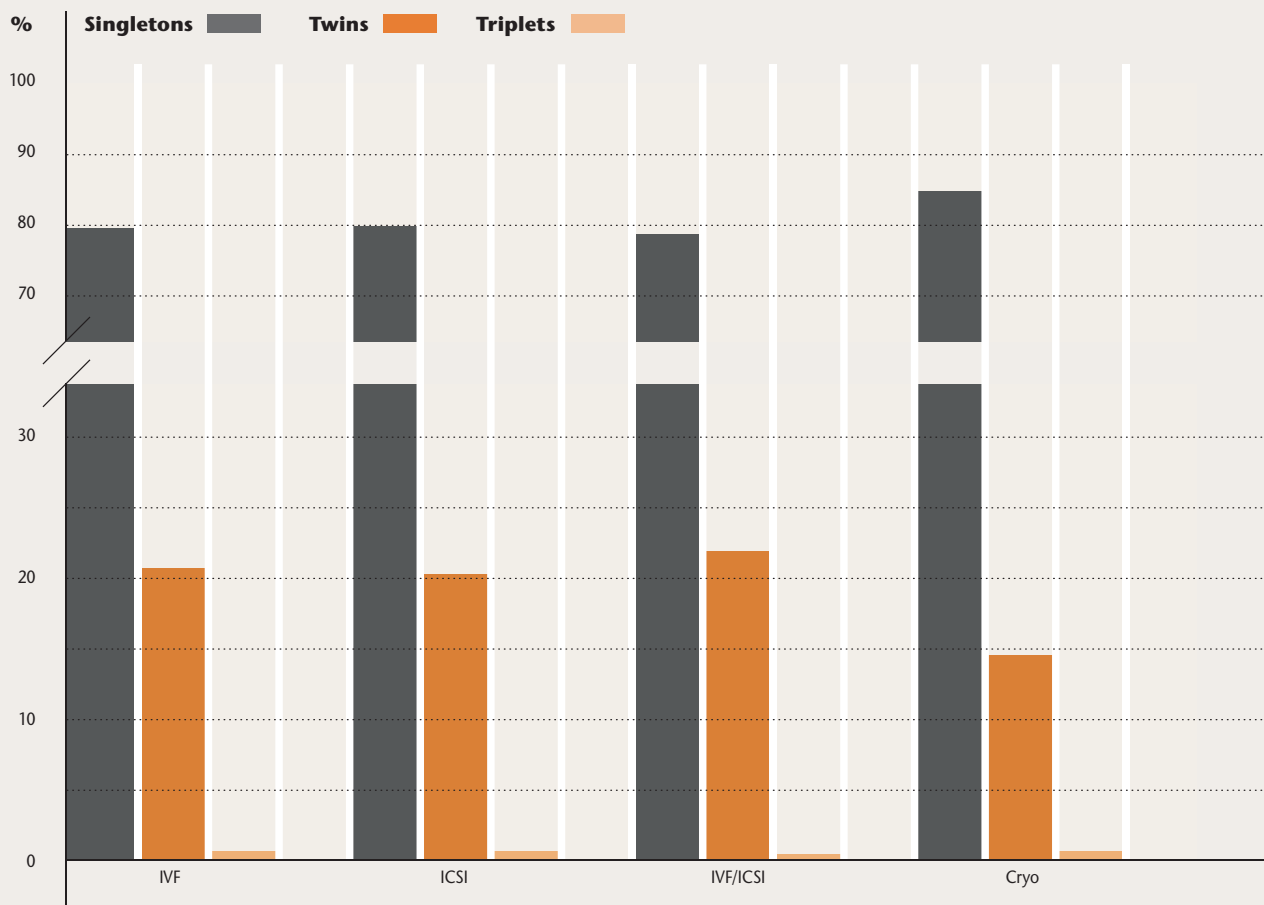
\*\*\*) Percentage of births per number of treatments

<sup>1</sup>) Total cycles reduced by the number of cycles with unknown pregnancy outcome

<sup>2</sup>) For cycles with unknown pregnancy outcome, the probable birth rate (births/pregnancy) was calculated and added to the number of known births

# Multiple Births 2012

Prospective and Retrospective Data



	IVF			ICSI			IVF/ICSI			Cryo Transfer		
	n	%	%	n	%	%	n	%	%	n	%	%
CP/ET	3,280	100.00		10,286	100.00		328	100.00		3,867	100.00	
Births	2,142	65.30	100.00	7,011	68.16	100.00	224	68.29	100.00	2,438	63.05	100.00
Singletons	1,685	51.37	78.66	5,543	53.89	79.06	174	53.05	77.68	2,068	53.48	84.82
Twins	443	13.51	20.68	1,422	13.82	20.28	49	14.94	21.88	354	9.15	14.52
Triplets	14	0.43	0.65	46	0.45	0.66	1	0.30	0.45	17	0.44	0.70
Quadruplets	0	0.00	0.00	0	0.00	0.00	0	0.00	0.00	0	0.00	0.00
No Information	572	17.44		1,507	14.65		37	11.28		570	14.74	
Miscarriages	499	15.21		1,620	15.75		60	18.29		791	20.46	
EPs	67	2.04		148	1.44		7	2.13		68	1.76	

## Births as a Function of Number of Embryos Transferred and Age Groups 2000 – 2012\*

IVF, ICSI, IVF/ICSI, Cryo Transfer – Prospective and Retrospective Data

Woman's Age in Years		Singletons		Twins		Triplets		Quadruplets		Total
		n	%	n	%	n	%	n	%	n
<b>&lt;= 24</b>	1 Embryo	138	100.00	0	0.00	0	0.00	0	0.00	138
	2 Embryos	1,617	76.71	482	22.87	9	0.43	0	0.00	2,108
	3 Embryos	271	67.75	107	26.75	20	5.00	2	0.50	400
	<b>Total</b>	<b>2,026</b>	<b>76.57</b>	<b>589</b>	<b>22.26</b>	<b>29</b>	<b>1.10</b>	<b>2</b>	<b>0.08</b>	<b>2,646</b>
<b>25 – 29</b>	1 Embryo	1,406	95.32	67	4.54	2	0.14	0	0.00	1,475
	2 Embryos	15,667	75.62	4,955	23.92	93	0.45	2	0.01	20,717
	3 Embryos	2,684	68.71	1,005	25.73	214	5.48	3	0.08	3,906
	<b>Total</b>	<b>19,757</b>	<b>75.70</b>	<b>6,027</b>	<b>23.09</b>	<b>309</b>	<b>1.18</b>	<b>5</b>	<b>0.02</b>	<b>26,098</b>
<b>30 – 34</b>	1 Embryo	3,544	96.17	137	3.72	4	0.11	0	0.00	3,685
	2 Embryos	32,691	77.49	9,322	22.10	174	0.41	1	0.00	42,188
	3 Embryos	7,626	70.83	2,706	25.13	428	3.98	6	0.06	10,766
	<b>Total</b>	<b>43,861</b>	<b>77.44</b>	<b>12,165</b>	<b>21.48</b>	<b>606</b>	<b>1.07</b>	<b>7</b>	<b>0.01</b>	<b>56,639</b>
<b>35 – 39</b>	1 Embryo	3,761	96.24	143	3.66	4	0.10	0	0.00	3,908
	2 Embryos	24,242	83.11	4,838	16.59	79	0.27	1	0.00	29,160
	3 Embryos	10,363	76.72	2,813	20.83	311	2.30	2	0.01	13,489
	<b>Total</b>	<b>38,366</b>	<b>82.36</b>	<b>7,794</b>	<b>16.73</b>	<b>394</b>	<b>0.85</b>	<b>3</b>	<b>0.01</b>	<b>46,557</b>
<b>&gt;= 40</b>	1 Embryo	827	96.27	32	3.73	0	0.00	0	0.00	859
	2 Embryos	3,086	90.82	305	8.98	6	0.18	1	0.03	3,398
	3 Embryos	2,668	87.02	382	12.46	16	0.52	0	0.00	3,066
	<b>Total</b>	<b>6,581</b>	<b>89.87</b>	<b>719</b>	<b>9.82</b>	<b>22</b>	<b>0.30</b>	<b>1</b>	<b>0.01</b>	<b>7,323</b>

Total number of births 2000 – 2012: 139,263

\*) Starting in 2012, based on registry participants 2012 ff.

# Births as a Function of Number of Embryos Transferred and Treatment Method 2000 – 2012\*



Prospective and Retrospective Data

## IVF

	Singletons		Twins		Triplets		Quadruplets		Total
	n	%	n	%	n	%	n	%	
1 Embryo	2,016	98.53	30	1.47	0	0.00	0	0.00	2,046
2 Embryos	18,897	77.98	5,242	21.63	93	0.38	1	0.00	24,233
3 Embryos	5,966	68.43	2,383	27.33	364	4.17	6	0.07	8,719
<b>Total</b>	<b>26,879</b>	<b>76.80</b>	<b>7,655</b>	<b>21.87</b>	<b>457</b>	<b>1.31</b>	<b>7</b>	<b>0.02</b>	<b>34,998</b>

## ICSI

	Singletons		Twins		Triplets		Quadruplets		Total
	n	%	n	%	n	%	n	%	
1 Embryo	4,201	98.50	64	1.50	0	0.00	0	0.00	4,265
2 Embryos	45,371	79.10	11,791	20.56	197	0.34	3	0.01	57,362
3 Embryos	12,640	74.92	3,723	22.07	502	2.98	6	0.04	16,871
<b>Total</b>	<b>62,212</b>	<b>79.25</b>	<b>15,578</b>	<b>19.85</b>	<b>699</b>	<b>0.89</b>	<b>9</b>	<b>0.01</b>	<b>78,498</b>

## Cryo Transfer

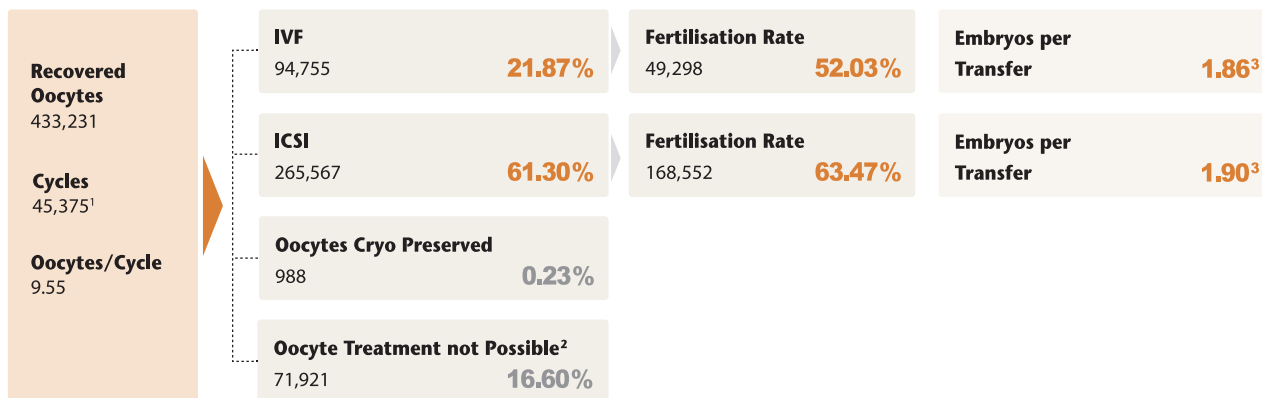
	Singletons		Twins		Triplets		Quadruplets		Total
	n	%	n	%	n	%	n	%	
1 Embryo	2,068	97.55	52	2.45	0	0.00	0	0.00	2,120
2 Embryos	12,991	86.20	2,023	13.42	56	0.37	0	0.00	15,070
3 Embryos	4,653	77.10	1,258	20.85	123	2.04	1	0.02	6,035
<b>Total</b>	<b>19,712</b>	<b>84.87</b>	<b>3,333</b>	<b>14.35</b>	<b>179</b>	<b>0.77</b>	<b>1</b>	<b>0.00</b>	<b>23,225</b>

\*) Starting in 2012, based on registry participants 2012 ff.



# Fertilisation Rate 2013

## IVF and ICSI – Prospective Data



## Embryos per Transfer<sup>3</sup> and Children After IVF, ICSI 1997 – 2013

Prospective and retrospective Data

		1997	2001	2002	2003	2004	2005	2006	2007	2008	2009	2010	2011*	2012	2013
<b>IVF</b>	Embryos Transf.	2.49	2.25	2.19	2.17	2.15	2.11	2.08	2.08	2.06	2.03	2.01	1.99	1.88	1.87
	Children/Transf.	0.21	0.24	0.22	0.23	0.23	0.24	0.25	0.25	0.24	0.24	0.22	0.15	0.24	0.18
	Children/Deliv.	1.31	1.27	1.26	1.26	1.25	1.23	1.23	1.24	1.24	1.22	1.24	1.26	1.22	1.27
<b>ICSI</b>	Embryos Transf.	2.56	2.3	2.21	2.17	2.15	2.11	2.09	2.08	2.08	2.06	2.05	2.02	1.91	1.88
	Children/Transf.	0.22	0.24	0.22	0.23	0.23	0.24	0.24	0.24	0.23	0.23	0.22	0.15	0.24	0.17
	Children/Deliv.	1.29	1.23	1.23	1.23	1.22	1.22	1.20	1.21	1.22	1.21	1.21	1.22	1.22	1.23
<b>Cryo-Transfer</b>	Embryos Transf.	2.34	2.20	2.14	2.12	2.14	2.10	2.10	2.07	2.07	2.05	2.04	2.02	1.78	1.67
	Children/Transf.	0.10	0.12	0.12	0.12	0.12	0.14	0.14	0.14	0.14	0.14	0.14	0.10	0.15	0.12
	Children/Deliv.	1.14	1.16	1.16	1.16	1.17	1.16	1.16	1.16	1.15	1.16	1.16	1.18	1.16	1.17

1) In 507 cases no IVF- or ICSI treatment was performed. 149 are cases in which oocytes were recovered but nevertheless a cryo transfer was performed

2) Reason: e.g. immature oocytes or no sperm available

3) Mean

\*) The obvious discrepancy in the figures results from the incomplete data transfer in 2011

# Distribution of Indications 2013

IVF and ICSI – Prospective Data

## IVF

Male Factor ▶	Normal		Reduced Semen Quality		Other**		Total	
Female Factor ▼	n	%	n	%	n	%	n	%
Normal	1,259	12.52	721	7.17	828	8.24	2,808	27.93
Tubal Pathology	1,301	12.94	399	3.97	555	5.52	2,255	22.43
Endometriosis	573	5.70	198	1.97	331	3.29	1,102	10.96
Hyperandrog./PCO	221	2.20	81	0.81	137	1.36	439	4.37
Ovulatory Dysf.	397	3.95	228	2.27	209	2.08	834	8.30
Psychogen. Factors	4	0.04	1	0.01	3	0.03	8	0.08
Other*	1,096	10.90	274	2.73	822	8.18	2,192	21.80
No Information	17	0.17	10	0.10	388	3.86	415	4.13
<b>Total</b>	<b>4,868</b>	<b>48.42</b>	<b>1,912</b>	<b>19.02</b>	<b>3,273</b>	<b>32.56</b>	<b>10,053</b>	<b>100.00</b>

## ICSI

Male Factor ▶	Normal		Reduced Semen Qual.		Azoospermia		Other**		Total	
Female Factor ▼	n	%	n	%	n	%	n	%	n	%
Normal	847	2.46	9,882	28.75	959	2.79	3,224	9.38	14,912	43.38
Tubal Pathology	334	0.97	1,418	4.12	39	0.11	573	1.67	2,364	6.88
Endometriosis	241	0.70	1,270	3.69	37	0.11	671	1.95	2,219	6.46
Hyperandrog./PCO	65	0.19	952	2.77	57	0.17	383	1.11	1,457	4.24
Ovulatory Dysf.	157	0.46	1,680	4.89	125	0.36	484	1.41	2,446	7.12
Psychogen. Factors	0	0.00	24	0.07	0	0.00	14	0.04	38	0.11
Other*	503	1.46	4,515	13.13	281	0.82	3,282	9.55	8,581	24.96
No Information	14	0.04	39	0.11	6	0.02	2,300	6.69	2,359	6.86
<b>Total</b>	<b>2,161</b>	<b>6.29</b>	<b>19,780</b>	<b>57.54</b>	<b>1,504</b>	<b>4.38</b>	<b>10,931</b>	<b>31.80</b>	<b>34,376</b>	<b>100.00</b>

\*) The indications "sperm antibodies" and "cervical factor" are included here

\*\*) The indication "pathological function test" is included here

# IVF and ICSI – Results 2013

Prospective Data

## IVF 2013

	<b>n</b>	<b>%</b>	<b>Fertilisation %</b>	<b>Embryo %</b>	<b>Transfer %</b>	<b>Clin. Preg. %</b>
IVF	10,053	100.00				
Successful Fertilis.*	9,337	92.88	100.00			
Minimum 1 Embryo	8,920	88.73	95.53	100.00		
ET Performed	8,824	87.77	94.51	98.92	100.00	
Clin. Pregnancy	2,950	29.34	31.59	33.07	<b>33.43</b>	100.00
Birth	1,318					44.68
Miscarriage	459					15.56
Ectopic Pregnancy	56					1.90
Not Yet Recorded	1,117					37.86

## ICSI 2013 Total

	<b>n</b>	<b>%</b>	<b>Fertilisation %</b>	<b>Embryo %</b>	<b>Transfer %</b>	<b>Clin. Preg. %</b>
ICSI	34,376	100.00				
Successful Fertilis.*	32,713	95.16	100.00			
Minimum 1 Embryo	30,923	89.96	94.53	100.00		
ET Performed	30,710	89.34	93.88	99.31	100.00	
Clin. Pregnancy	9,382	27.29	28.68	30.34	<b>30.55</b>	100.00
Birth	4,330					46.15
Miscarriage	1,505					16.04
Ectopic Pregnancy	121					1.29
Not Yet Recorded	3,426					36.52

\*) Successful fertilisation of at least one oocyte per cycle

## TESE and Cryo Transfer – Results 2013

Prospective Data

### ICSI/TESE 2013

	<b>n</b>	<b>%</b>	<b>Fertilisation %</b>	<b>Embryo %</b>	<b>Transfer %</b>	<b>Clin. Preg. %</b>
ICSI	1,996	100.00				
Successful Fertilis.*	1,824	91.38	100.00			
Minimum 1 Embryo	1,799	90.13	98.63	100.00		
ET Performed	1,702	85.27	93.31	94.61	100.00	
Clin. Pregnancy	462	23.15	25.33	25.68	<b>27.14</b>	100.00
Birth	206					44.59
Miscarriage	66					14.29
Ectopic Pregnancy	8					1.73
Not Yet Recorded	182					39.39

## Cryo Transfer – Results 2013

Prospective Data

### Cryo Transfer 2013

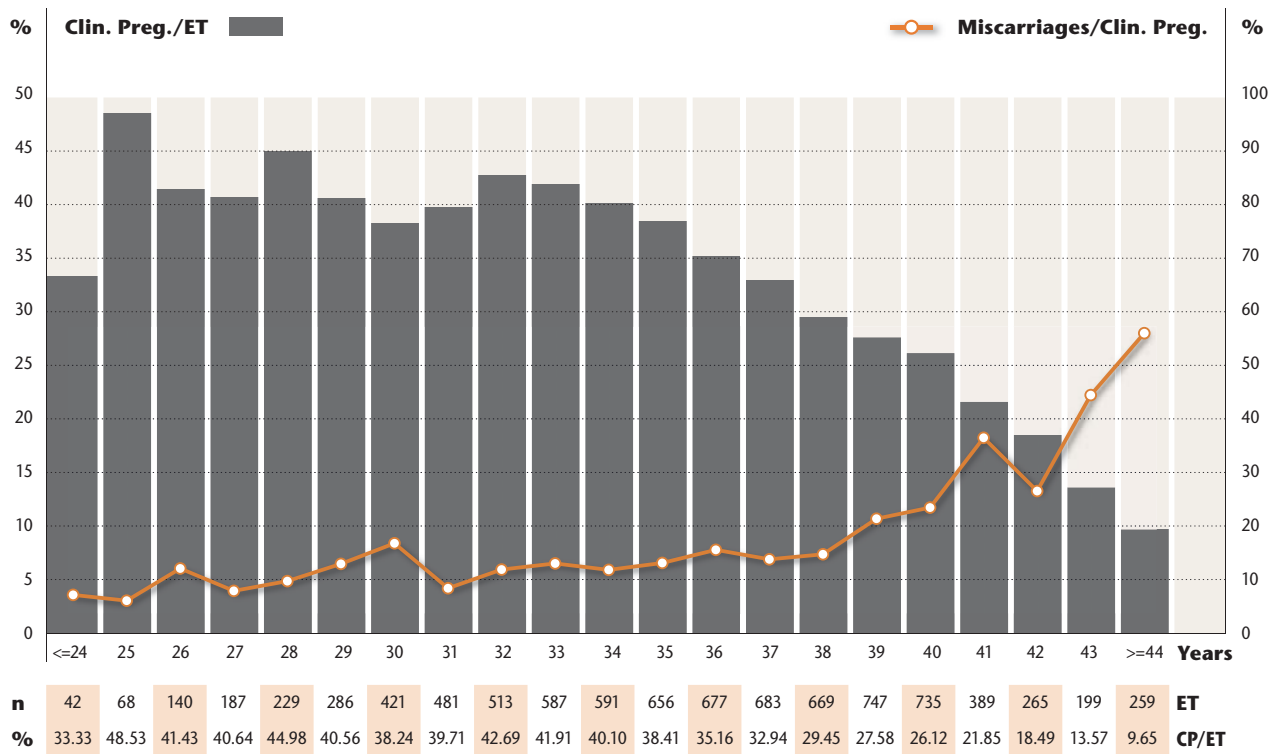
	<b>n</b>	<b>%</b>	<b>PN %</b>	<b>Transfer %</b>	<b>Clin. Preg. %</b>
Cryo Transfer Cycles	19,429	100.00			
Thawed PN	17,982	92.55	100.00		
ET Performed	17,719	91.20	98.54	100.00	
Clin. Pregnancy	3,999	20.58	22.24	<b>22.57</b>	100.00
Birth	1,817				45.44
Miscarriage	721				18.03
Ectopic Pregnancy	68				1.70
Not Yet Recorded	1,393				34.83

\*) Successful fertilisation of at least one oocyte per cycle

# Outcome (Clinical Pregnancy (CP)) as a Function of Female Age 2013

Prospective Data

## IVF 2013



Age in Years	OPU	Oocytes <sup>1</sup>	Insemin. <sup>1</sup>	ET	ET/OPU %	Trans. Embr. <sup>1</sup>	CP	CP/OPU %	CP/ET %	CP/ET: 2 Embr. transf. + min. 2 2-PN surplus
<= 29	1,092	11.94	11.70	952	87.18	1.86	400	36.63	<b>42.02</b>	<b>44.35</b>
30 – 34	2,932	10.52	10.35	2,593	88.44	1.88	1,054	35.95	<b>40.65</b>	<b>43.10</b>
35 – 39	3,856	8.49	8.34	3,432	89.00	1.90	1,118	28.99	<b>32.58</b>	<b>35.61</b>
40	853	7.01	6.85	735	86.17	1.99	192	22.51	<b>26.12</b>	<b>29.31</b>
41	472	6.28	6.14	389	82.42	1.93	85	18.01	<b>21.85</b>	<b>25.70</b>
42	295	6.01	5.92	265	89.83	1.94	49	16.61	<b>18.49</b>	<b>22.99</b>
43	242	5.83	5.74	199	82.23	2.06	27	11.16	<b>13.57</b>	<b>16.46</b>
44	184	5.11	5.00	149	80.98	1.91	13	7.07	<b>8.72</b>	<b>12.24</b>
45	80	6.63	6.43	73	91.25	2.00	8	10.00	<b>10.96</b>	<b>12.73</b>
>=46	47	3.74	3.60	37	78.72	1.73	4	8.51	<b>10.81</b>	<b>20.00</b>
<b>Gesamt</b>	<b>10,053</b>	<b>8.99</b>	<b>8.83</b>	<b>8,824</b>	<b>87.77</b>	<b>1.90</b>	<b>2,950</b>	<b>29.34</b>	<b>33.43</b>	<b>36.72</b>

1) Mean

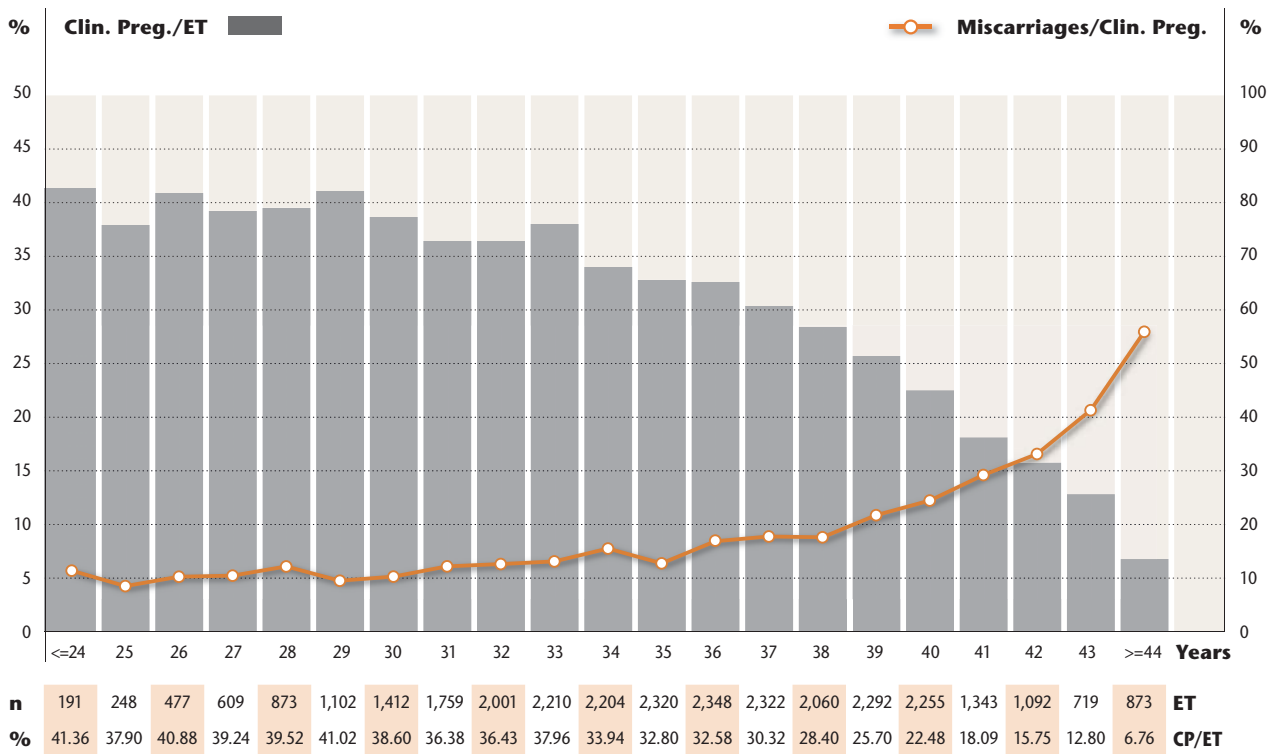


# Outcome (Clinical Pregnancy (CP)) as a Function of Female Age 2013



Prospective Data

## ICSI 2013



Age in Years	OPU	Oocytes <sup>1</sup>	Insemin. <sup>1</sup>	ET	ET/OPU %	Trans. Embr. <sup>1</sup>	CP	CP/OPU %	CP/ET %	CP/ET: 2 Embr. transf. + min. 2 2-PN surplus
<= 29	3,859	12.44	9.75	3,500	90.70	1.89	1,404	36.38	40.11	42.25
30 – 34	10,506	11.15	8.82	9,586	91.24	1.89	3,501	33.32	36.52	38.43
35 – 39	12,594	9.06	7.22	11,342	90.06	1.90	3,404	27.03	30.01	33.12
40	2,530	7.51	6.06	2,255	89.13	1.94	507	20.04	22.48	26.05
41	1,521	6.70	5.37	1,343	88.30	1.92	243	15.98	18.09	21.10
42	1,271	6.25	5.02	1,092	85.92	1.93	172	13.53	15.75	18.44
43	899	5.79	4.73	719	79.98	1.89	92	10.23	12.80	14.99
44	552	5.36	4.38	462	83.70	1.82	45	8.15	9.74	13.41
45	309	4.67	3.84	250	80.91	1.85	13	4.21	5.20	7.95
>=46	231	3.77	3.14	161	69.70	1.58	1	0.43	0.62	1.37
<b>Gesamt</b>	<b>34,272</b>	<b>9.54</b>	<b>7.58</b>	<b>30,710</b>	<b>89.61</b>	<b>1.89</b>	<b>9,382</b>	<b>27.38</b>	<b>30.55</b>	<b>33.73</b>

1) Mean

# Clinical Pregnancies (CP)/ET as a Function of the Number of Embryos Transferred and Age Groups 2013



IVF, ICSI, Cryo Transfer – Prospective Data

## IVF

Age in Years	1 Embryo		2 Embryos		3 Embryos		Total	
	ET	CP/ET %	ET	CP/ET %	ET	CP/ET %	ET	CP/ET %
<= 24	3	66.67	35	34.29	2	0.00	40	33.33
25 – 29	107	23.36	803	45.29	25	32.00	935	42.42
30 – 34	327	25.08	2,133	43.06	129	43.41	2,589	40.65
35 – 39	580	18.62	2,446	36.06	379	32.45	3,405	32.58
40 – 44	383	9.40	945	24.13	420	26.27	1,748	21.07
>= 45	32	0.00	47	17.02	28	10.71	107	10.91
<b>Total</b>	<b>1,432</b>	<b>17.67</b>	<b>6,409</b>	<b>37.66</b>	<b>983</b>	<b>30.57</b>	<b>8,824</b>	<b>33.43</b>

## ICSI

Age in Years	1 Embryo		2 Embryos		3 Embryos		Total	
	ET	CP/ET %	ET	CP/ET %	ET	CP/ET %	ET	CP/ET %
<= 24	22	22.73	150	44.67	12	50.00	184	41.36
25 – 29	383	27.94	2,746	42.33	194	38.66	3,323	40.04
30 – 34	1,284	25.20	7,627	38.79	667	34.33	9,578	36.52
35 – 39	2,063	17.29	7,817	33.74	1,476	29.66	11,356	30.01
40 – 44	1,549	9.21	3,004	21.07	1,316	22.10	5,869	18.04
>= 45	176	0.57	132	4.55	92	7.61	400	3.41
<b>Total</b>	<b>5,477</b>	<b>17.08</b>	<b>21,476</b>	<b>34.76</b>	<b>3,757</b>	<b>27.82</b>	<b>30,710</b>	<b>30.55</b>

## Cryo Transfer

Age in Years	1 Embryo		2 Embryos		3 Embryos		Total	
	ET	CP/ET %	ET	CP/ET %	ET	CP/ET %	ET	CP/ET %
<= 24	11	0.00	90	25.56	12	25.00	113	24.22
25 – 29	271	11.55	1,192	29.78	298	26.36	1,761	26.68
30 – 34	982	17.78	4,173	26.30	1,354	28.68	6,509	25.32
35 – 39	1,289	15.16	4,283	23.19	1,386	25.79	6,958	22.18
40 – 44	525	10.10	1,280	14.30	448	18.30	2,253	15.20
>= 45	32	6.25	60	3.33	33	6.06	125	4.58
<b>Total</b>	<b>3,110</b>	<b>14.70</b>	<b>11,078</b>	<b>23.88</b>	<b>3,531</b>	<b>24.89</b>	<b>17,719</b>	<b>22.57</b>

## Clinical Pregnancies (CP)/Fresh Transfer as a Function of Embryo Quality 2013

IVF, ICSI, IVF/ICSI – Prospective Data

Quality		<= 29 Years		30 – 34 Years		35 – 39 Years		>= 40 Years		Total	
Ideal	Not Ideal	ET	CP/ET %	ET	CP/ET %	ET	CP/ET %	ET	CP/ET %	ET	CP/ET %
0	1	79	11.39	272	12.87	484	7.23	545	10.28	1,380	9.78
0	2	258	24.03	813	21.65	885	17.29	350	8.57	2,306	18.26
0	3	20	20.00	67	11.94	117	22.22	92	10.87	296	16.22
1	0	491	31.16	1,465	29.49	2,532	17.14	1,553	12.49	6,041	20.08
1	1	443	34.54	1,236	33.25	1,364	21.77	657	18.72	3,700	26.59
1	2	31	32.26	82	24.39	126	25.40	197	19.80	436	23.17
2	0	3,042	45.38	7,849	42.64	8,057	37.35	3,064	23.20	22,011	38.38
2	1	31	41.94	123	33.33	294	28.23	291	16.49	739	25.03
3	0	157	41.40	574	39.72	1,346	31.72	1,351	24.13	3,428	30.51
<b>Total</b>		<b>4,552</b>	<b>40.63</b>	<b>12,481</b>	<b>37.84</b>	<b>15,205</b>	<b>29.57</b>	<b>8,100</b>	<b>18.98</b>	<b>40,337</b>	<b>31.32</b>

## Clinical Pregnancies (CP)/Frozen Transfer as a Function of Embryo Quality 2013

Cryo Transfer – Prospective Data

Quality		IVF		ICSI	
Ideal	Not Ideal	ET	CP/ET %	ET	CP/ET %
0	1	177	7.91	576	10.42
0	2	340	10.00	1,106	13.83
0	3	66	7.58	222	12.16
1	0	602	18.77	2,093	18.16
1	1	482	18.88	1,501	22.45
1	2	83	25.30	236	21.19
2	0	1,651	25.86	5,850	26.62
2	1	110	30.00	668	27.25
3	0	321	29.28	942	26.54
<b>Total*</b>		<b>3,832</b>	<b>21.71</b>	<b>13,194</b>	<b>22.71</b>

\*) In 84 cases the preceding treatment was IVF / ICSI; in 609 cases the preceding treatment is unknown. From these 693 cases, an additional 171 pregnancies resulted.

# Miscarriage (MISC) Rates as a Function of Female Age and Number of Embryos Transferred 2013



Prospective Data

## IVF, ICSI, IVF/ICSI

Age in Years	1 Embryo		2 Embryos		3 Embryos		Total	
	CP	MISC/CP %	CP	MISC/CP %	CP	MISC/CP %	CP	MISC/CP %
<= 24	8	37.50	79	10.13	6	0.00	93	11.83
25 – 29	140	13.57	1,504	10.04	83	14.46	1,727	10.54
30 – 34	425	13.65	3,999	12.55	285	16.14	4,709	12.87
35 – 39	485	17.73	3,622	16.54	546	17.77	4,653	16.81
40 – 44	190	33.16	836	27.15	400	34.50	1,426	30.01
>= 45	1	0.00	14	21.43	10	80.00	25	44.00
<b>Total</b>	<b>1,249</b>	<b>18.33</b>	<b>10,054</b>	<b>14.82</b>	<b>1,330</b>	<b>22.63</b>	<b>12,633</b>	<b>15.99</b>

## Cryo Transfer

Age in Years	1 Embryo		2 Embryos		3 Embryos		Total	
	CP	MISC/CP %	CP	MISC/CP %	CP	MISC/CP %	CP	MISC/CP %
<= 24	0	0.00	23	21.74	3	0.00	26	19.23
25 – 29	29	17.24	455	17.36	58	10.34	542	16.61
30 – 34	222	15.77	1,066	17.73	238	18.07	1,526	17.50
35 – 39	241	24.07	969	15.38	271	21.40	1,481	17.89
40 – 44	102	14.71	183	24.04	133	25.56	418	22.25
>= 45	2	0.00	2	50.00	2	0.00	6	16.67
<b>Total</b>	<b>596</b>	<b>18.96</b>	<b>2,698</b>	<b>17.31</b>	<b>705</b>	<b>20.00</b>	<b>3,999</b>	<b>18.03</b>

# Clinical Pregnancy Rate (CPR) as a Function of the Stimulation Protocol 2013

Prospective Data

## IVF

	u-FSH	rec-FSH	hMG	recLH u. recFSH	recLH u. hMG	Other*	No Info.	Total
<b>Short GnRHa</b>	3	226	302	32	103	1	2	669
Transfer Rate (%)	100.00	93.78	91.24	91.43	91.96	100.00	100.00	91.77
CP/ET (%)	66.67	28.76	32.12	43.75	20.39	0.00	0.00	29.75
<b>Long GnRHa</b>	88	1,218	537	175	361	19	4	2,402
Transfer Rate (%)	89.80	88.58	92.91	89.29	93.04	61.29	100.00	89.96
CP/ET (%)	37.50	39.49	33.15	34.29	34.63	36.84	25.00	36.84
<b>No GnRHa-Analoga</b>	20	245	203	64	132	14	161	839
Transfer Rate (%)	86.96	92.11	90.63	98.46	84.08	93.33	72.20	86.23
CP/ET (%)	45.00	35.10	34.48	29.69	34.09	28.57	19.88	31.59
<b>GnRHa-Antagonists</b>	83	2,790	923	517	495	88	18	4,914
Transfer Rate (%)	93.26	86.86	86.97	84.20	86.54	83.81	60.00	86.46
CP/ET (%)	38.55	34.91	28.88	26.89	31.92	31.82	22.22	32.59
<b>Total</b>	<b>194</b>	<b>4,479</b>	<b>1,965</b>	<b>788</b>	<b>1,091</b>	<b>122</b>	<b>185</b>	<b>8,824</b>

## ICSI

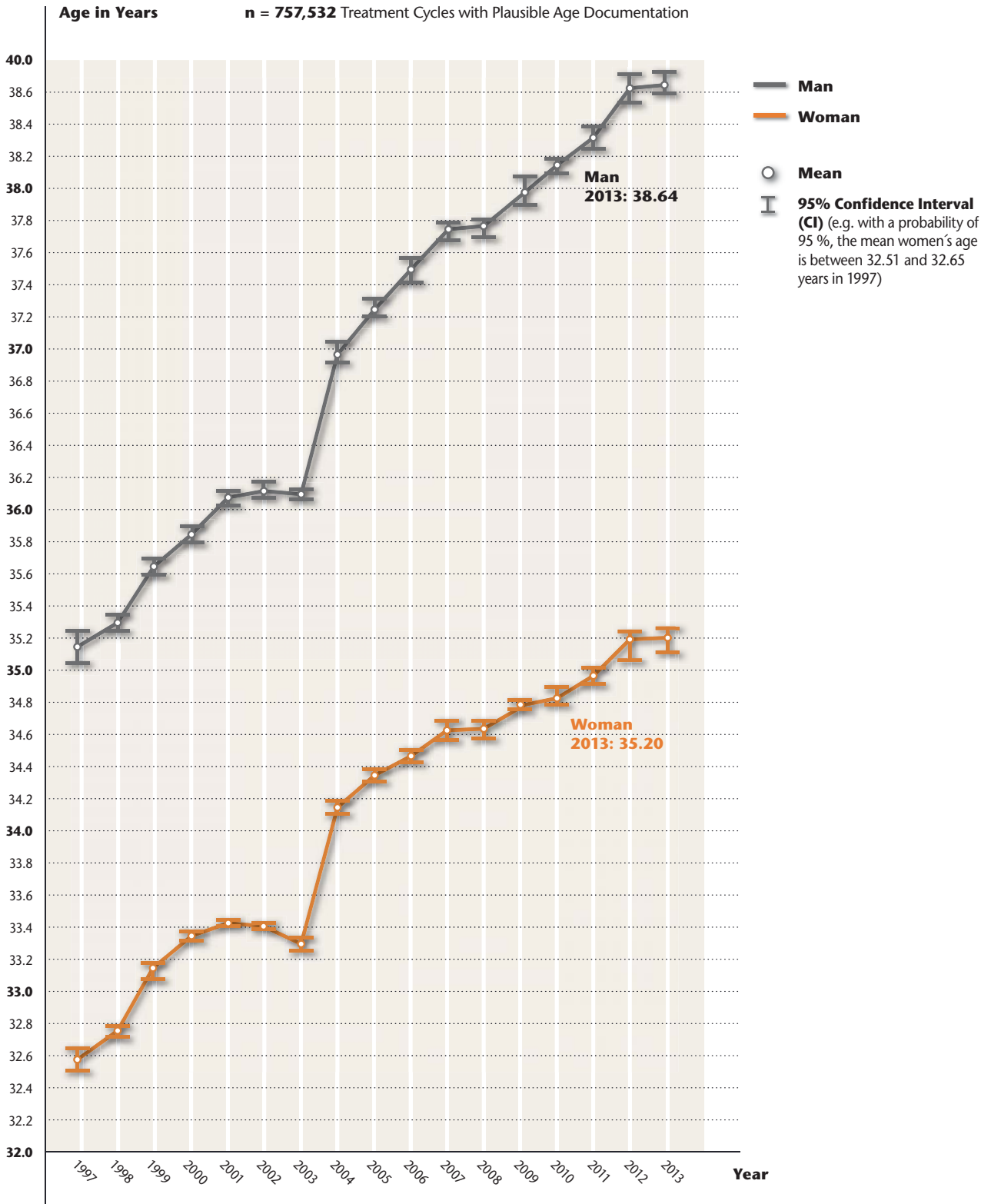
	u-FSH	rec-FSH	hMG	recLH u. recFSH	recLH u. hMG	Other*	No Info.	Total
<b>Short GnRHa</b>	27	727	733	87	336	63	21	1,994
Transfer Rate (%)	84.38	90.65	91.51	90.63	98.82	53.39	94.65	90.51
CP/ET (%)	18.52	24.48	23.87	24.14	14.88	17.46	42.86	22.52
<b>Long GnRHa</b>	139	4,446	1,702	691	1,646	139	21	8,784
Transfer Rate (%)	94.56	93.72	93.16	90.45	91.70	89.68	80.77	92.87
CP/ET (%)	39.57	35.70	31.37	31.69	33.05	30.94	38.10	34.04
<b>No GnRHa-Analoga</b>	38	870	572	147	563	38	624	2,852
Transfer Rate (%)	88.37	89.60	86.14	84.48	83.28	97.44	84.26	83.81
CP/ET (%)	39.47	33.22	31.29	30.61	27.00	42.11	18.27	28.37
<b>GnRHa-Antagonists</b>	148	9,323	2,951	1,957	2,278	325	98	17,080
Transfer Rate (%)	90.24	89.92	89.78	85.76	83.69	89.04	79.03	88.44
CP/ET (%)	26.35	32.97	24.03	29.94	27.88	23.08	16.33	29.62
<b>Total</b>	<b>352</b>	<b>15,366</b>	<b>5,958</b>	<b>2,882</b>	<b>4,823</b>	<b>565</b>	<b>764</b>	<b>30,710</b>

\*) e.g. u-FSH and hMG, Clomifen/rec-FSH, Clomifen/hMG etc.



# Mean Age for Women and Men 1997 – 2013\*

IVF, ICSI, IVF/ICSI – Prospective and Retrospective Data

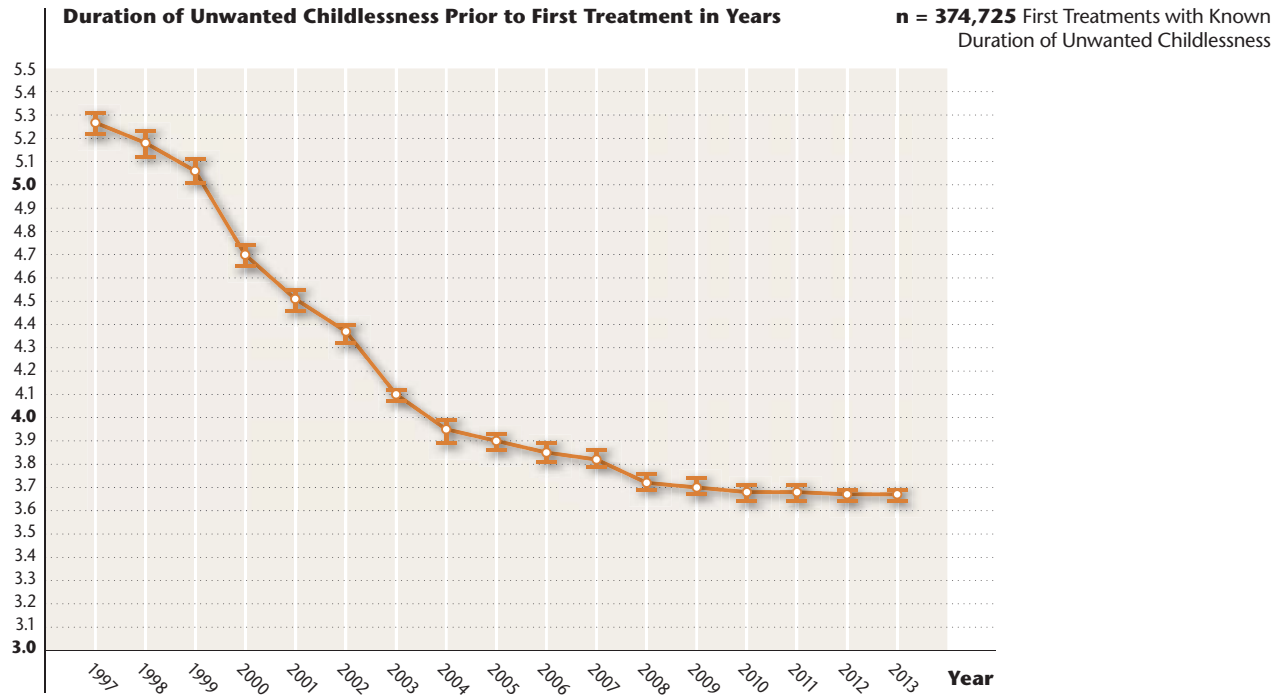


\*) Starting in 2012, based on registry participants 2012 ff.

# Duration of Unwanted Childlessness Prior to First Treatment 1997 – 2013\*



IVF, ICSI, IVF/ICSI – Prospective and Retrospective Data

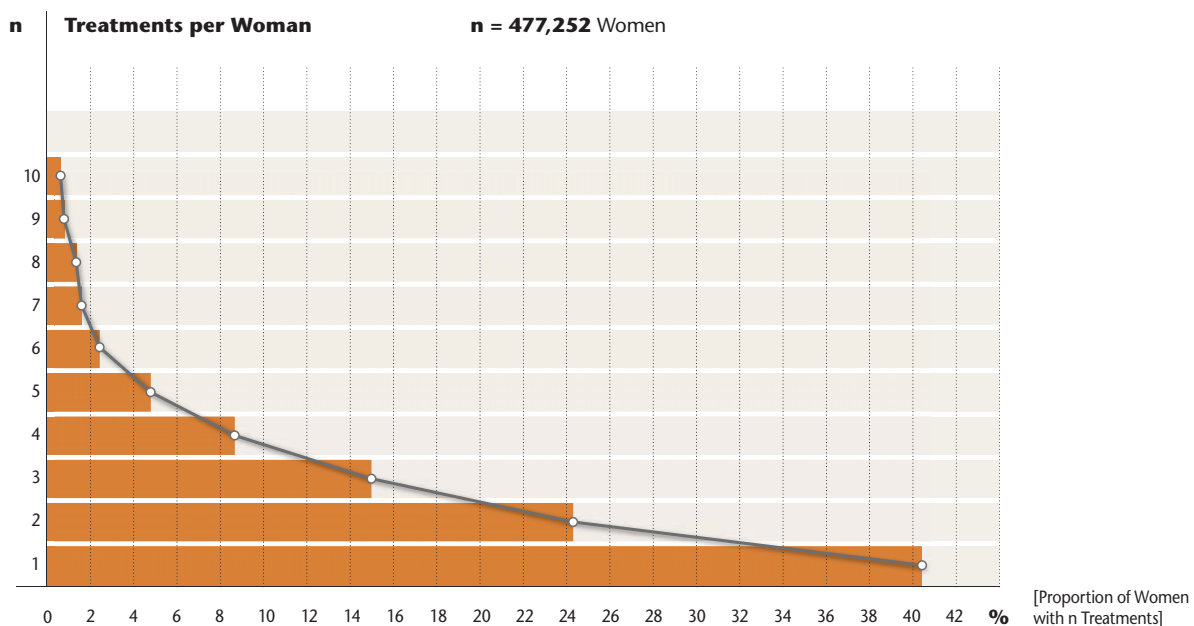


\*) Starting in 2012, based on registry participants 2012 ff.

# Number of all Treatment Cycles per Woman 1997– 2013\*



IVF, ICSI, IVF/ET, Cryo ET – Prospective and Retrospective Data, Regardless of the Result



\*) Starting in 2012, based on registry participants 2012 ff.

# Children Born 1997–2013\*\*

Prospective and Retrospective Data

## IVF, ICSI, IVF/ICSI

	Singletons		Twins		Triplets		Quadruplets		Total
	n	%	n	%	n	%	n	%	n
<b>2001</b>	6,798	60.89	3,956	35.43	411	3.68	0	-	11,165
*	(6,774)	(61.04)	(3,919)	(35.31)	(405)	(3.65)	(0)	-	(11,098)
<b>2002</b>	7,746	62.59	4,256	34.39	366	2.96	8	0.06	12,376
*	(7,724)	(62.78)	(4,210)	(34.22)	(362)	(2.94)	(7)	(0.06)	(12,303)
<b>2003</b>	10,723	62.13	5,960	34.53	552	3.20	24	0.14	17,259
*	(10,688)	(62.78)	(5,866)	(34.22)	(533)	(2.94)	(24)	(0.14)	(17,111)
<b>2004</b>	5,368	63.69	2,826	33.53	234	2.78	0	-	8,428
*	(5,352)	(62.46)	(2,801)	(34.28)	(223)	(3.11)	(0)	-	(8,376)
<b>2005</b>	5,527	63.84	2,936	33.91	183	2.11	12	0.14	8,658
*	(5,515)	(63.90)	(2,906)	(33.44)	(179)	(2.66)	(11)	(0.13)	(8,611)
<b>2006</b>	5,906	65.50	2,922	32.41	189	2.10	0	-	9,017
*	(5,894)	(64.05)	(2,890)	(33.75)	(174)	(2.08)	(0)	-	(8,958)
<b>2007</b>	6,663	65.45	3,504	33.9	150	1.45	4	0.04	10,231
*	(6,628)	(64.69)	(3,471)	(33.88)	(143)	(1.40)	(4)	(0.04)	(10,246)
<b>2008</b>	6,696	64.09	3,528	33.77	216	2.07	8	0.08	10,448
*	(6,672)	(64.34)	(3,481)	(33.57)	(209)	(2.02)	(8)	(0.08)	(10,370)
<b>2009</b>	7,253	65.89	3,560	32.34	186	1.69	8	0.07	11,007
*	(7,217)	(66.02)	(3,523)	(32.23)	(183)	(1.67)	(8)	(0.07)	(10,931)
<b>2010</b>	6,767	64.42	3,554	33.83	183	1.74	0	-	10,504
*	(6,724)	(64.62)	(3,507)	(33.70)	(175)	(1.68)	(0)	-	(10,406)
<b>2011</b>	6,940	63.64	3,856	35.00	219	1.98	0	-	11,015
*	(6,880)	(63.95)	(3,832)	(35.06)	(216)	(1.97)	(0)	-	(10,928)
<b>2012</b>	7,424	64.53	3,892	33.83	189	1.64	0	-	11,505
*	(7,402)	(64.86)	(3,828)	(33.54)	(183)	(1.60)	(0)	-	(11,413)
<b>2013</b>	5,127	61.45	3,030	36.32	186	2.23	0	-	8,343
*	(5,112)	(61.93)	(2,974)	(36.03)	(168)	(2.04)	(0)	-	(8,254)

\*) The values in brackets indicate live births. Totalling 1997 – 2013:

107,134 (103,697) singletons, 58,533 (57,814) twins, 5,497 (5,223) triplets, 88 (85) quadruplets. In total: 171,252 (166,819)

\*\*) Starting in 2012, based on registry participants 2012 ff.

# Children Born 1997–2013\*\*

Prospective and Retrospective Data



## Total (IVF, ICSI, IVF/ICSI, Cryo Transfer)

	Singletons		Twins		Triplets		Quadruplets		Total
	n	%	n	%	n	%	n	%	n
<b>2001</b>	7,795	62.20	4,288	34.21	450	3.59	0	-	12,533
*	(7,764)	(62.33)	(4,248)	(34.10)	(444)	(3.56)	(0)	-	(12,456)
<b>2002</b>	8,930	63.84	4,662	33.33	387	2.77	8	0.06	13,987
*	(8,902)	(64.02)	(4,615)	(33.19)	(382)	(2.75)	(7)	(0.05)	(13,906)
<b>2003</b>	11,922	63.16	6,334	33.55	597	3.16	24	0.13	18,877
*	(11,887)	(63.48)	(6,237)	(33.31)	(578)	(3.09)	(24)	(0.13)	(18,726)
<b>2004</b>	6,891	65.63	3,336	31.77	273	2.6	0	-	10,500
*	(6,869)	(65.81)	(3,306)	(31.68)	(262)	(2.51)	(0)	-	(10,437)
<b>2005</b>	7,038	65.76	3,440	32.14	213	1.99	12	0.11	10,703
*	(7,020)	(65.93)	(3,408)	(32.01)	(209)	(1.96)	(11)	(0.10)	(10,648)
<b>2006</b>	7,419	66.87	3,450	31.10	222	2.00	4	0.04	11,095
*	(7,402)	(67.14)	(3,417)	(30.99)	(202)	(1.83)	(4)	(0.04)	(11,025)
<b>2007</b>	8,407	66.35	4,976	32.17	183	1.44	4	0.03	12,670
*	(8,364)	(66.45)	(4,043)	(32.12)	(176)	(1.40)	(4)	(0.03)	(12,587)
<b>2008</b>	8,444	65.79	4,142	32.27	240	1.87	8	0.06	12,834
*	(8,416)	(66.07)	(4,084)	(32.06)	(230)	(1.81)	(8)	(0.06)	(12,738)
<b>2009</b>	9,016	67.32	4,152	31.00	216	1.61	8	0.06	13,392
*	(8,969)	(67.42)	(4,114)	(30.92)	(213)	(1.60)	(8)	(0.06)	(13,304)
<b>2010</b>	8,619	66.18	4,156	31.91	249	1.91	0	-	13,024
*	(8,566)	(66.35)	(4,105)	(31.80)	(239)	(1.85)	(0)	-	(12,910)
<b>2011</b>	8,839	64.55	4,556	33.27	298	2.18	0	-	13,693
*	(8,767)	(64.03)	(4,526)	(33.05)	(294)	(2.15)	(0)	-	(13,587)
<b>2012</b>	9,498	66.23	4,602	32.09	240	1.67	0	-	14,340
*	(9,470)	(66.50)	(4,536)	(31.85)	(234)	(1.64)	(0)	-	(14,240)
<b>2013</b>	6,744	63.50	3,652	34.38	225	2.12	0	-	10,621
*	(6,724)	(63.95)	(3,584)	(34.08)	(207)	(1.97)	(0)	-	(10,515)

\*) The values in brackets indicate live births. Totalling 1997 – 2013:

129,947 (129,810) singletons, 66,326 (65,558) twins, 6,016 (5,828) triplets, 92 (89) quadruplets. In total: 202,381 (201,285)

\*\*\*) Starting in 2012, based on registry participants 2012 ff.





# Children as a Function of Week of Gestation (WoG) and Birth Weight (BW) 2012\*

## Singletons 2012

WoG	<25	25	26	27	28	29	30	31	32	33	34	35	36	37	38	39	40	41	>41	Total
n	23	7	7	16	18	23	24	33	53	98	158	226	436	1,088	1,924	2,280	1,886	380	43	8,723
BW Q 25	450	620	800	830	950	1,130	1,200	1,450	1,480	1,980	2,200	2,375	2,550	2,840	3,020	3,130	3,270	3,390	3,220	2,980
BW Median	550	670	890	925	1,048	1,324	1,492	1,650	1,800	2,167	2,460	2,600	2,835	3,110	3,300	3,410	3,570	3,650	3,400	3,320
BW Q 75	650	790	980	1,100	1,320	1,560	1,770	1,920	2,170	2,390	2,680	2,920	3,110	3,420	3,590	3,710	3,860	3,960	3,870	3,660

**Percentiles 2012: p25 = 38th WoG, p50 = 39th WoG, p75 = 40th WoG;**

Percentiles 1997–2012: p25 = 38th WoG, p50 = 39th WoG, p75 = 40th WoG

*Proportion of children born before the completion of the 37th WoG: 25.34%*

## Twins 2012

WoG	<25	25	26	27	28	29	30	31	32	33	34	35	36	37	38	39	40	Total**
n	50	24	20	38	48	72	78	114	192	314	392	540	908	916	277	77	10	4,071
BW Q 25	505	740	830	905	960	1,190	1,350	1,490	1,700	1,830	1,990	2,180	2,380	2,510	2,580	2,460	2,840	2,020
BW Median	578	808	927	1,050	1,200	1,365	1,480	1,700	1,880	1,980	2,235	2,400	2,600	2,743	2,800	2,820	2,940	2,430
BW Q 75	700	890	963	1,150	1,320	1,490	1,650	1,820	2,085	2,160	2,420	2,640	2,810	2,980	3,060	3,290	3,000	2,760

**Percentiles 2012: p25 = 34th WoG, p50 = 36th WoG, p75 = 37th WoG;**

Percentiles 1997–2012: p25 = 34th WoG, p50 = 36th WoG, p75 = 37th WoG

*Proportion of children born before the completion of the 37th WoG: 91.03%*

*\*\*) The total contains 1 case with a WoG > 40*

## Triplets 2012

WoG	24	25	26	27	28	29	30	31	32	33	34	35	Total***
n	0	3	0	15	3	21	24	39	42	48	6	9	210
BW Q 25	-	810	-	840	905	1,100	1,240	1,350	1,490	1,770	1,760	2,110	1,340
BW Median	-	850	-	960	1,170	1,440	1,405	1,554	1,730	1,945	1,855	2,430	1,655
BW Q 75	-	860	-	1,025	1,210	1,575	1,590	1,800	1,800	2,150	1,900	2,880	1,900

**Percentiles 2012: p25 = 31st WoG, p50 = 32nd WoG, p75 = 34th WoG;**

Percentiles 1997–2012: p25 = 30th WoG, p50 = 32nd WoG, p75 = 33th WoG

*Proportion of children born before the completion of the 37th WoG: 100.00%*

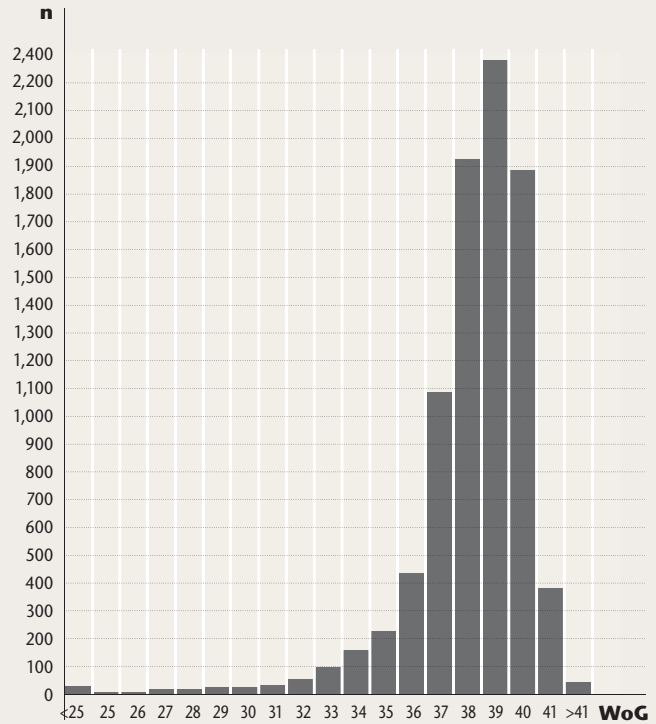
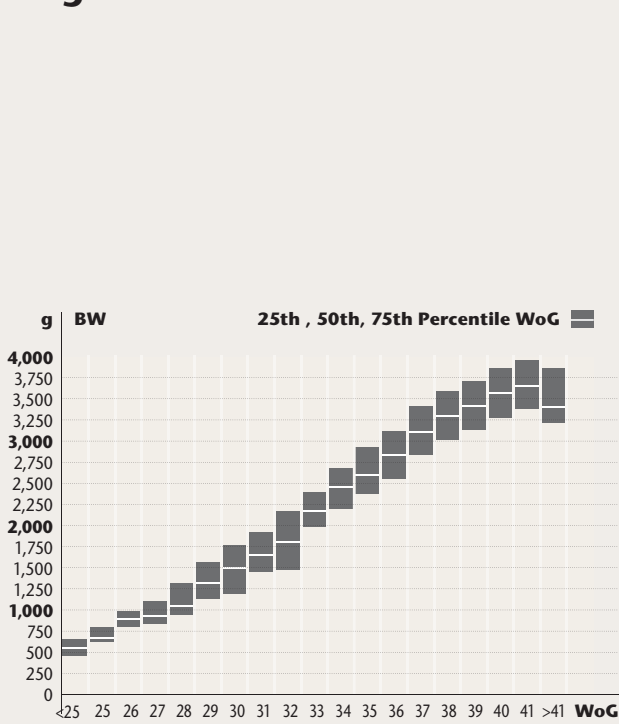
*\*\*\*) The total does not contain a single case of birth weight at gestational week > 35*

*\*) Children with plausible birth weight and week of gestation, using prospective and retrospective data*

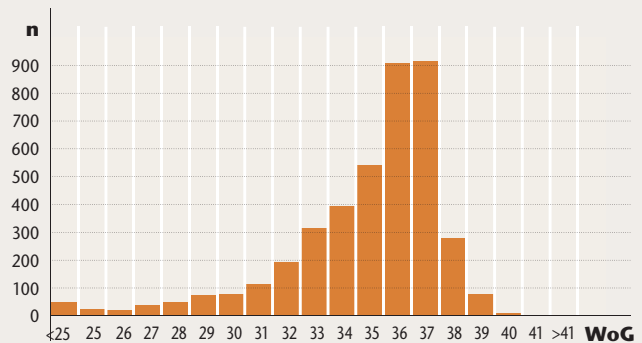
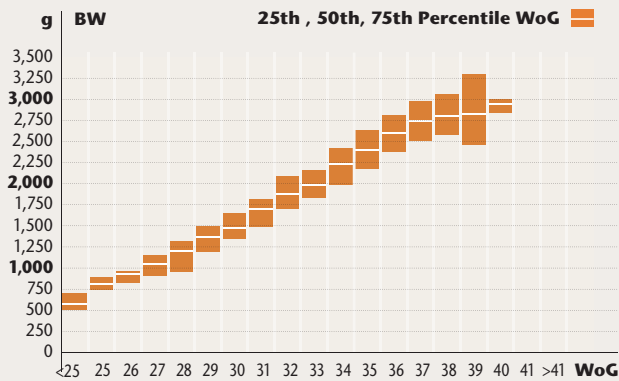


# Children as a Function of Week of Gestation (WoG) and Birth Weight (BW) 2012\*

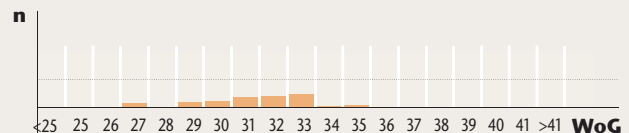
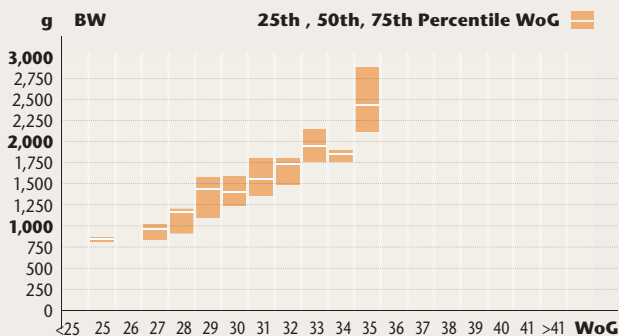
## Singletons 2012



## Twins 2012



## Triples 2012

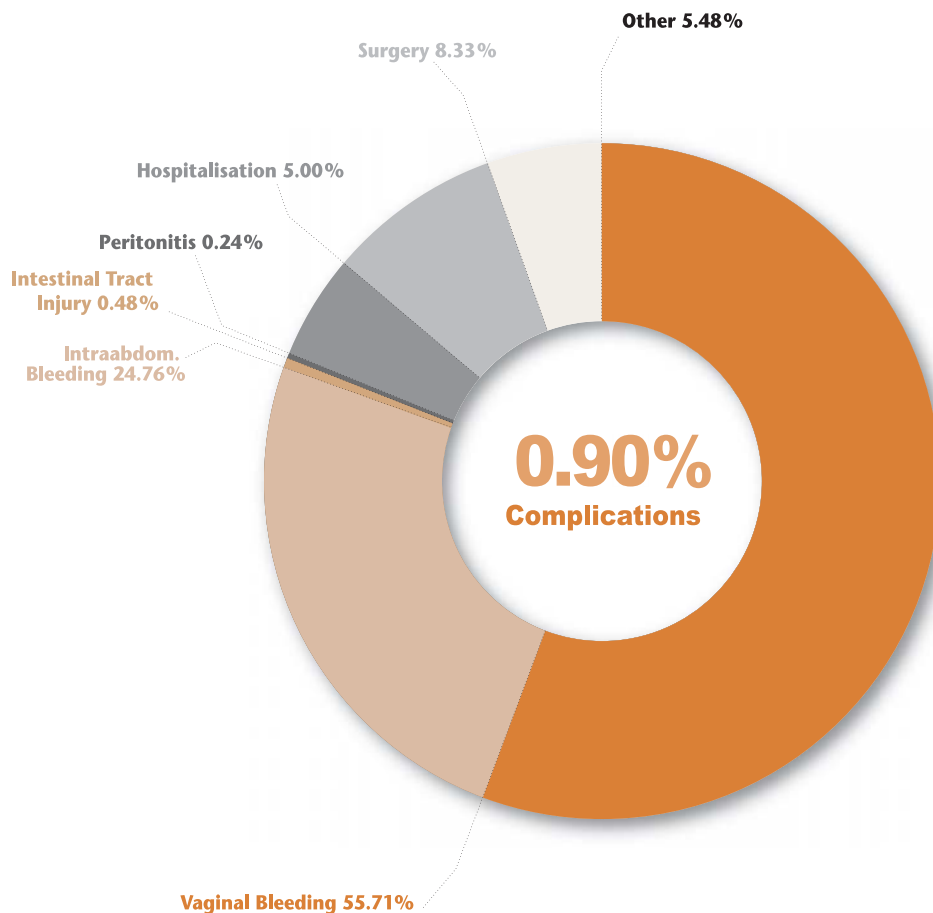


\*) Children with plausible birth weight and week of gestation, using prospective and retrospective data

# Complications as a Function of Ovum Pick-up (OPU) 2013



Prospective Data



Total OPU's	n	%
No Information	1	0.00%
No Complications	46,477	99.10%
<b>Complications</b>	<b>420</b>	<b>0.90%</b>

Complications	n	%
Vaginal Bleeding	234	55.71
Intraabdom. Bleeding	104	24.76
Intestinal Tract Injury	2	0.48
Peritonitis	1	0.24
Hospitalisation	21	5.00
Surgery	35	8.33
Other	23	5.48
<b>Total</b>	<b>420</b>	<b>100.00</b>

# Ovarian Hyperstimulation Syndrome (OHSS) as a Function of the Stimulation Protocol

IVF, ICSI, IVF/ICSI – Prospective Data

	Stimulation	%	Oocytes Retrieved	OHSS III	OHSS III/Stim %
<b>Short GnRH</b>	3,272	6.64	7.05	1	0.03
FSH only	1,181		8.17	1	0.03
hMG only	1,291		6.62	0	-
FSH + hMG	642		6.21	0	-
Other	150		5.79	0	-
No Information	8		3.50	0	-
<b>Long GnRH</b>	12,954	26.27	10.23	50	0.39
FSH only	6,746		11.34	23	0.18
hMG only	2,638		8.54	3	0.02
FSH + hMG	2,444		9.55	23	0.18
Other	1,105		9.00	0	-
No Information	21		7.71	1	0.01
<b>No Analoga</b>	5,764	11.69	5.48	3	0.05
FSH only	2,192		6.22	1	0.02
hMG only	1,480		4.70	1	0.02
FSH + hMG	28		5.93	1	0.02
Other	1,409		7.33	0	-
No Information	655		0.80	0	-
<b>GnRH-Antagonists</b>	27,317	55.40	8.86	71	0.26
FSH only	15,003		10.30	50	0.18
hMG only	5,088		5.82	2	0.01
FSH + hMG	3,690		7.73	12	0.04
Other	3,409		8.47	7	0.03
No Information	127		3.73	0	-
<b>Total</b>	<b>49,307</b>	<b>100.00</b>	<b>8.70</b>	<b>125</b>	<b>0.25</b>



## Registry Participants 2013

Kinderwunschzentrum Dresden  
Praxisklinik Dr. med. H.-J. Held  
Dr. med. Hans-Jürgen Held  
Prager Straße 8a  
01069 Dresden  
T: 0351-50100-0, F: 0351-501400-28  
info@ivf-dresden.de  
www.ivf-dresden.de

Gynäkologische Endokrinologie und Reproduktionsmedizin der Universitätsfrauenklinik Dresden  
Dr. med. Maren Goeckenjan, Prof. Dr. med. Henry Alexander, Constanze Reisenbüchler, Dr. rer. nat. Gudrun Keck  
Fetscherstraße 74  
01307 Dresden  
T: 0351-4583491, F: 0351-4585351  
maren.goeckenjan@uniklinikum-dresden.de  
www.uniklinikum-dresden.de/gyn

Kinderwunschzentrum Leipzig-Chemnitz  
Dr. med. Fayez Abu Hmeidan, Dr. med. Petra Jogschies, Dörte Geistert, Laila Shugair  
Goldschmidtstraße 30  
04103 Leipzig  
T: 0341-141200, F: 0341-1412081  
info@ivf-leipzig.de  
www.ivf-leipzig.de

Kinderwunschzentrum Praxisklinik City Leipzig  
Dr. med. Astrid Gabert, Dr. med. Katharina Bauer, Dr. med. Isabel Schwandt, Jana Sonneck, Dr. med. Doreen Marx, Prof. Dr. med. Henry Alexander, Dr. rer. nat. Stefanie Breuer  
Petersstraße 1  
04109 Leipzig  
T: 0341-215855-0, F: 0341-215855-17  
info@ivf-city-leipzig.de  
www.ivf-city-leipzig.de

Universitätsklinikum Halle (Saale)  
Zentrum für Reproduktionsmedizin und Andrologie  
Univ.-Prof. Dr. med. Hermann M. Behre, Dr. med. Petra Kaltwaßer, Dr. med. Solveig Köller, Dr. rer. nat. Ewald Seliger, Dr. rer. nat. Thomas Greither  
Ernst-Grube-Straße 40  
06120 Halle (Saale)  
T: 0345-557-3332, F: 0345-557-4788  
zra@uk-halle.de  
www.kinderwunsch-halle.de

Klinikum der Friedrich Schiller Universität Jena  
Klinik für Frauenheilkunde und Geburtshilfe  
Prof. Dr. med. Ingo Runnebaum, Prof. Dr. med. Jürgen Weiss, Dr. rer. nat. Ines Hoppe  
Bachstraße 18  
07743 Jena  
T: 03641-933529, F: 03641-933064  
ingo.runnebaum@med.uni-jena.de  
www.uni-jena.de/ufk

Zentrum für Reproduktionsmedizin Jena & Erfurt  
PD Dr. med. habil. Heidi Fritzsche, Dr. med. Andreas Fritzsche  
Markt 4  
07743 Jena  
Juri-Gagarin-Ring 96–98  
99084 Erfurt  
T: 03641-829610, F: 03641-829681  
information@kinderwunschnet.de  
www.kinderwunschnet.de  
www.kinderwunsch-thueringen.de

Kinderwunschzentrum Leipzig-Chemnitz  
Dr. med. Fayez Abu Hmeidan, Dr. med. Petra Jogschies, Dörte Geistert, Laila Shugair  
Jakobikirchplatz 4  
09111 Chemnitz  
T: 0371-5034980, F: 0371-50349881  
info@ivf-chemnitz.de  
www.ivf-chemnitz.de

Kinderwunschzentrum Praxisklinik City Leipzig Standort Chemnitz  
Dr. med. Astrid Gabert, Dr. med. Katharina Bauer, Dr. med. Isabel Schwandt, Jana Sonneck, Dr. med. Doreen Marx, Dr. rer. nat. Stefanie Breuer  
Flemmingstraße 2a  
09116 Chemnitz  
T: 0371-433130-0, F: 0371-433130-17  
info@kinderwunschzentrum-chemnitz.de  
www.ivf-city-leipzig.de

Kinderwunschzentrum am Potsdamer Platz  
Dr. med. Hanadi Awwadeh, Dr. med. Anja Mutz  
Leipziger Platz 7  
10117 Berlin  
T: 030-2008950-0, F: 030-2008950-99  
info@kinderwunsch-potsdamerplatz.de  
www.kinderwunsch-potsdamerplatz.de

MVZ Praxisklinik Sydow am Gendarmenmarkt GmbH  
Dr. med. Peter Sydow, Dr. med. Carmen Sydow, Dr. med. Ulrike Bergmann-Hensel, Dr. med. Birgit Bestvater, Dr. med. Wibke Wilkening  
Kronenstraße 55–58  
10117 Berlin  
T: 030-20626720, F: 030-206267218  
info@praxisklinik-sydow.de  
www.praxisklinik-sydow.de

Praxis für Fertilität – Kinderwunsch- und Endometriose-Zentrum Berlin  
Dr. med. Gülden Halis, Dr. med. David J. Peet, Dipl.-Biol. Sonja Zeitler  
Friedrichstraße 79  
10117 Berlin  
T: 030-8321190-0, F: 030-8321190-19  
info@fertilitaet.de  
www.fertilitaet.de

Wunschkind Berlin  
Dr. Björn Horstkamp, PD Dr. Bernd Krause, Dr. Petra Rudolph, Dr. Anja Bretschneider-Schwarz, Dr. Bettina Pfüller  
Uhlandstraße 20–25  
10623 Berlin  
T: 030-880349056, F: 030-880349050  
info@wunschkind-berlin.de  
www.wunschkind-berlin.de

Kinderwunschzentrum Berlin  
Dr. med. Reinhard Hannen, Dr. med. Christian Friedrich Stoll  
Landgrafenstraße 14  
10787 Berlin  
T: 030-263983-0, F: 030-263983-99  
info@kinderwunschzentrum.de  
www.kinderwunschzentrum.de

Reproduktionsmedizinisches Zentrum im Lützow Center GLC  
Dr. med. Detlef H. G. Temme  
Wichmannstraße 5  
10787 Berlin  
T: 030-2309980, F: 030-23099830  
info@ivf-berlin.de  
www.ivf-berlin.de

Kinderwunsch am Wittenbergplatz  
Praxis Dr. med. Rolf Metzger  
in Praxisgemeinschaft mit Berliner Kinderwunschzentrum  
Dr. med. Rolf Metzger, Dr. med. Christiane Peters, Rainer Mogalle  
Tauentzienstraße 6  
10789 Berlin  
T: 030-21962428, F: 030-23607395  
mail@berlin-ivf-praxis.de  
www.berlin-ivf-praxis.de

Kinderwunschzentrum an der Gedächtniskirche  
Dr. med. Matthias Bloechle, Dr. med. Silke Marr  
Rankestraße 34  
10789 Berlin  
T: 030-219092-0, F: 030-219092-99  
info@kinderwunsch-berlin.de  
www.kinderwunsch-berlin.de

**Kinderwunschzentrum FERA im Wenckebach-Klinikum**

Dr. med. Andreas Jantke, Dr. med. Anna Stegelmann, Dipl.-Biol. Cornelia Meyer  
Wenckebachstraße 23  
12099 Berlin  
T: 030-760070130, F: 030-760070160  
kinderwunsch@fera-berlin.de  
www.kinderwunsch-ivf-berlin.de

**Kinderwunschzentrum am Innsbrucker Platz Berlin**

Babette Remberg, Dr. med. Susanne Tewordt-Thyselius, Dr. rer. nat. Thomas Jeziorowski  
Hauptstraße 65  
12159 Berlin  
T: 030-85757930, F: 030-85757935  
praxis@kinderwunschpraxis-berlin.de  
www.kinderwunschpraxis-berlin.de

**Praxis für Kinderwunschtherapie Berlin Helle-Mitte**

Dr. med. Muna Zaghoul-Abu Dakah,  
Dr. med. Svetlana Hoffmann  
Stendaler Straße 24  
12627 Berlin  
T: 030-992779-0, F: 030-99277922  
info@berliner-kinderwunsch.de  
www.berliner-kinderwunsch.de

**Fertility Center Berlin – Auf dem Gelände der DRK Kliniken Westend**

Prof. Dr. med. Heribert Kentenich, Dr. med. Gabriele Stief, Dr. med. Andreas Tandler-Schneider, Dr. med. Anette Siemann, Dr. med. Marina Werling, Dr. rer. nat. Ulrike Montag, Dr. rer. nat. Claus Sibold, Dipl.-Biopharmak. Jacqueline Ulrich  
Spandauer Damm 130  
14050 Berlin  
T: 030-233208110, F: 030-233208119  
info@fertilitycenter-berlin.de  
www.fertilitycenterberlin.de

**Kinderwunschzentrum Potsdam**

Dr. med. Kay-Thomas Moeller, Dr. med. Kathleen Linca, Dr. Manzoor Nowshari  
Babelsberger Straße 8  
14473 Potsdam  
T: 0331-23189292, F: 0331-23189293  
info@kinderwunsch-potsdam.de  
www.kinderwunsch-potsdam.de

**Praxiszentrum Frauenheilkunde Rostock**

PD Dr. med. Heiner Müller, Annette Busecke, Anja Bossow  
Südring 81  
18059 Rostock  
T: 0381-4401-2030, F: 0381-4401-2031  
info@ivf-rostock.de  
www.ivf-rostock.de

**amedes experts**

Facharzt-Zentrum für Kinderwunsch, Pränatale Medizin, Endokrinologie und Osteologie Hamburg  
Prof. Dr. med. Michael Ludwig, Prof. Dr. med. Frank Nawroth, Dr. med. Sabine Neubeck, PD Dr. med. Barbara Sonntag, Dr. med. Astrid Dangel, Prof. Dr. med. Klaus Diedrich, Prof. Dr. med. Christoph Dorn, Dr. med. Cathrin Grave, Dr. med. Ines Doll, Dr. med. Ute Hugo, Dr. rer. nat. Beatrice Maxrath  
Mönckebergstraße 10  
20095 Hamburg  
T: 0800-5891688, F: 040-380708310  
kinderwunsch-hamburg@amedes-group.com  
www.amedes-experts-hamburg.de

**MVZ Fertility Center Hamburg GmbH**

Prof. Dr. med. Klaus Rudolf, Dr. med. (IL) Robert Fischer, Dr. med. Kay Christian Löbbecke, Dr. med. Urte Reinhardt, Prof. Dr. med. Wolfgang Schulze, Dr. med. Katja Schwenn  
Speersort 4  
20095 Hamburg  
T: 040-30804400, F: 040-30804952  
fch@kinderwunsch-hamburg.de  
www.kinderwunsch-hamburg.de

**Kinderwunschzentrum Altonaer Straße im Gynaecologicum Hamburg**

Dr. med. Annick Horn, Dr. med. Wolf Michel, Dr. med. Tim Cordes, Prof. Dr. med. Markus S. Kupka  
Altonaer Straße 59  
20357 Hamburg  
T: 040-306836-0, F: 040-306836-69  
info@ivf-hamburg.de  
www.ivf-hamburg.de

**KinderwunschZentrum Hafencity Hamburg**

Dr. med. Ekbert Göhmann, Dr. med. Thomas Krämer  
Überseeallee 1  
20457 Hamburg  
T: 040-30088-100, F: 040-30088-1010  
kontakt@kinderwunsch-hafencity.de  
www.kinderwunsch-hafencity.de

**Kinderwunsch Praxisklinik Fleetinsel Hamburg**

Tip/Dr. univ. Ist. Semsettin E. Koçak, Dr. med. Peter List, Cemile Ballnus, Dr. rer. nat. Uwe Weidner  
Admiralitätsstraße 4  
20459 Hamburg  
T: 040-38605553, F: 040-38605551  
kocak@kinderwunschzentrum-hamburg.de  
www.kinderwunschzentrum-hamburg.de

**MVZ Endokrinologikum Hamburg – Zentrum für Hormon- und Stoffwechselerkrankungen, Reproduktionsmedizin und Pränatale Medizin**

Prof. Dr. med. Christoph Keck, PD Dr. med. Michael Graf, Dr. med. Tina Osterholz-Zaleski, Dr. med. Raquel Pozo Ugarte, PD Dr. med. Sabine Segerer, Dr. med. Nina Wegmann, Dr. rer. nat. Birthe Nitz, Nicole Becker  
Lornsenstraße 4–6  
22767 Hamburg  
T: 040-30628200, F: 040-30628349  
gyninfo@endokrinologikum.com  
www.endokrinologikum.com

**Universitäres Kinderwunschzentrum Lübeck und Manhagen**

Zentrum für Gynäkologische Endokrinologie und Reproduktionsmedizin am Universitätsklinikum Schleswig-Holstein  
Universitäre Kinderwunschzentren GmbH  
Prof. Dr. med. Georg Griesinger, M. Sc., PD Dr. med. Askan Schultze-Mosgau, Dr. med. Marion Depenbusch  
Ratzeburger Allee 111–125  
23562 Lübeck  
T: 0451-505-778-10, F: 0451-505-778-299  
kinderwunsch@uk-sh.de  
www.kinderwunsch-luebeck.de

**fertilitycenterkiel**

Dr. med. Martin Völckers, Dr. med. Nevin Inan  
Prüner Gang 15  
24103 Kiel  
T: 0431-9741333, F: 0431-9741322  
info@fertilitycenter.de  
www.fertilitycenter.de

**Universitäres Kinderwunschzentrum Kiel**

PD Dr. med. Sören von Otte, Dr. med. Andreas Schmutzler, Dr. rer. nat. Heike Eckel  
Arnold-Heller-Straße 3, Haus 24  
24105 Kiel  
T: 0431-5978877, F: 0431-5978878  
kinderwunsch-kiel@uksh.de  
www.uksh.de/kinderwunsch-kiel

**KinderwunschKiel**

Dr. med. Kurt Brandenburg, Dr. med. Angela Carstensen, Dr. med. Kirsten Schem, Dr. sc. agr. Annette Bonhoff  
Im Brauereiviertel 5  
24118 Kiel  
T: 0431-553433, F: 0431-5192745  
info@kinderwunschkiel.de  
www.kinderwunschkiel.de

**Team Kinderwunsch Oldenburg**

Dr. med. Saif Jibril, Dr. med. Gerhard Pohligh  
Leo-Trepp-Straße 5  
26121 Oldenburg  
T: 0441-2489091, F: 0441-2480611  
tko@telemed.de  
www.teamkinderwunsch.de

Tagesklinik Oldenburg – Zentrum für Kinderwunschbehandlung  
 Dr. med. Jörg Hennefründ, Dr. med. Heike Boppert, Dr. med. Michael Heeder  
 Achternstraße 21  
 26122 Oldenburg  
 T: 0441-922700, F: 0441-9227028  
 info@tagesklinik-oldenburg.de  
 www.tagesklinik-oldenburg.de

Kinderwunschzentrum Ostfriesland  
 Dr. med. Grita Hasselbach, Dr. rer. nat. Isabell Motsch  
 Hafestraße 6d  
 26789 Leer (Ostfriesland)  
 T: 0491-45425-0, F: 0491-45425-10  
 info@kinderwunschostfriesland.de  
 www.kinderwunschostfriesland.de

Kinderwunsch Bremen  
 Dr. med. Achim von Stutterheim, Tanja Finger, Dr. med. Anjarasoa Jung  
 Emmastraße 220  
 28213 Bremen  
 T: 0421-224910, F: 0421-2249122  
 info@kinderwunschbremen.de  
 www.kinderwunschbremen.de

BZF-Bremer Zentrum für Fortpflanzungsmedizin  
 Dr. med. Olaf Drost, Prof. Dr. med. Ernst Heinrich Schmidt, Dr. sc. hum. Martin Pinteric  
 Gröpelinger Heerstraße 406–408  
 28239 Bremen  
 T: 0421-6102-1212, F: 0421-6102-1213  
 info@icsi.de  
 www.icsi.de

Team Kinderwunsch Hannover  
 Dr. med. Nabil Saymé, PD Dr. med. Ulrich A. Knuth, Dipl.-Biol. T. Krebs  
 Brühlstraße 19  
 30169 Hannover  
 T: 0511-313095, F: 0511-313096  
 info@team-kinderwunsch-hannover.de  
 www.team-kinderwunsch-hannover.de

Medizinische Hochschule Hannover  
 Bereich Gynäkologische Endokrinologie und Reproduktionsmedizin, OE 6410  
 Dr. med. Cordula Schippert,  
 Dr. med. Guillermo-José Garcia-Rocha,  
 PD Dr. Frauke von Versen-Höyneck  
 Carl-Neuberg-Straße 1  
 30625 Hannover  
 T: 0511-532-6099, F: 0511-532-6094  
 schippert.cordula@mh-hannover.de  
 www.mh-hannover.de/11327.html

Kinderwunschzentrum Langenhagen & Wolfsburg MVZ  
 Ärztlicher Leiter: Dr. med. Thilo Schill  
 Ostpassage 9  
 30853 Langenhagen  
 Sauerbruchstraße 7  
 38440 Wolfsburg  
 T: 0511-972300, F: 0511-9723018  
 praxis@kinderwunsch-langenhagen.de  
 www.kinderwunsch-langenhagen.de

Zentrum für Reproduktionsmedizin und Humangenetik  
 Dr. med. Franz-J. Algermissen, Dr. med. Georg Wilke, Dr. med. Notker Graf, Dr. med. Natascha Peper  
 Gartenstraße 18–20  
 31141 Hildesheim  
 T: 05121-20679-30, F: 05121-20679-11  
 praxis@kinderwunsch-hildesheim.de  
 www.kinderwunsch-hildesheim.de

Zentrum für Kinderwunschbehandlung und pränatale Medizin  
 Dr. med. Dipl.-Biochem. Onno Buurman, Dr. med. Michael Dumschat, Dr. med. Ralf Menkhau  
 Simeonsplatz 17  
 32423 Minden  
 T: 0571-972600, F: 0571-9726099  
 info@kinderwunsch-minden.net,  
 buurman@kinderwunsch-minden.net  
 www.kinderwunsch.net

Praxisklinik Prof. Volz  
 Prof. Dr. med. Joachim Volz, PD Dr. med. Stefanie Volz-Köster  
 Adenauer Platz 7  
 33602 Bielefeld  
 T: 0521-9883060, F: 0521-98830622  
 kinderwunsch@frog.de  
 www.frog.de

Bielefeld Fertility-Center – Zentrum für Reproduktionsmedizin und Gynäkologische Endokrinologie  
 Paul A. Ebert, Dr. med. Karl Völklein, Beata Szytajlo, Dr. med. Wiebke Rübberdt,  
 Dr. med. Beate Harms  
 Werther Straße 266  
 33619 Bielefeld  
 T: 0521-101005, F: 0521-101079  
 praxis@kinderwunsch-bielefeld.de  
 www.kinderwunsch-bielefeld.de

MVZ für Reproduktionsmedizin am Klinikum Kassel  
 Dr. med. Marc Janos Willi, Dr. med. Oswald Schmidt, Prof. Dr. (UBsAs) Miguel J. Hinrichsen  
 Mönchebergstraße 41–43, Haus F  
 34125 Kassel  
 T: 0561-980-2980, F: 0561-9802981  
 info@kinderwunsch-kassel.de  
 www.kinderwunsch-kassel.de

RepKo – Reproduktionsmedizinisches Kompetenzzentrum am Universitätsklinikum Gießen & Marburg GmbH  
 PD Dr. med. Volker Ziller, Prof. Dr. med. Uwe Wagner  
 Baldingerstraße  
 35043 Marburg  
 T: 06421-58-61330, F: 06421-5867070  
 Klinikstraße 33  
 35392 Gießen  
 T: 0641-98545207, F: 0641-98557099  
 www.repko-ukgm.de

Kinderwunschzentrum Mittelhessen  
 Dr. med. Amir Hajimohammad, Berthold Oels  
 Sportparkstraße 9  
 35578 Wetzlar  
 T: 06441-2002020, F: 06441-20020299  
 info@ivf-mh.de  
 www.ivf-mh.de

gyn-medicum  
 Zentrum für Kinderwunsch  
 Dr. med. Monica Tobler, Dr. med. Andreas Schmutzler, Dr. sc. agr. Manuela Ropeter-Scharfenstein  
 Waldweg 5  
 37073 Göttingen  
 T: 0551-41337, F: 0551-41722  
 www.gyn-medicum.de

Kinderwunschzentrum Göttingen  
 Dr. med. Rüdiger Moltrecht, Dr. med. Sabine Hübner, Dr. med. Thomas Welcker, Dr. rer. nat. Stephanie Mittmann, Dr. med. Peter Schulzeck, Dr. med. Filiz Sakin-Kaindl  
 Kasseler Landstraße 25a  
 37081 Göttingen  
 T: 0551-99888-0, F: 0551-99888-99  
 info@kiwu-goettingen.de  
 www.kiwu-goettingen.de

Kinderwunschzentrum Magdeburg  
 Dr. med. Ingrid Nickel, Dr. med. Evelyn Richter, Dipl. Biol. Katrin Pribbernow  
 Ulrichplatz 1  
 39104 Magdeburg  
 T: 0391-662489-0, F: 0391-662489-29  
 info@kiwumed.de  
 www.kinderwunschzentrum-magdeburg.de

Otto-von Guericke-Universität Magdeburg  
 Universitätsklinik für Reproduktionsmedizin  
 Prof. Dr. med. Prof. h. c. Jürgen Kleinstein, Carina Strecker, Dr. rer. nat. Katja Seidel  
 Gerhart-Hauptmann-Straße 35  
 39108 Magdeburg  
 T: 0391-6717390, F: 0391-6717389  
 juergen.kleinstein@med.ovgu.de  
 www.krep.ovgu.de

Kinderwunsch-Kö  
 Dr. med. Martina Behler, Tanja Emde  
 Königsallee 63–65  
 40215 Düsseldorf  
 T: 0211-3113550, F: 0211-31135522  
 info@kinderwunsch-koe.de  
 www.kinderwunsch-koe.de

Interdisziplinäres Kinderwunschzentrum  
 Düsseldorf MVZ GmbH  
 Dr. Michael C. W. Scholtes, Ph. D., Dipl. med. Kersten Marx, Prof. Dr. med. Stefan Kießler, Dr. med. Petra Hubert, Dr. med. Selma Yildirim-Assaf, Katja Neldner, Dr. med. Ingrid Hass-Wenzel, Dr. med. Werner H. Fabry, Dr. Dipl.-Biol. Ralf Böhm  
 Völklinger Straße 4  
 40219 Düsseldorf  
 T: 0211-90197-0, F: 0211-9019750  
 info@ivf-duesseldorf.de  
 www.kids4nrw.de

UniKiD – Universitäres interdisziplinäres  
Kinderwunschzentrum Düsseldorf  
Prof. Dr. med. Jan-Steffen Krüssel, Dr. med.  
Nina Bachmann, Dr. med. Daniel Fehr, M.Sc.,  
Dr. med. Tanja Freundl-Schütt, PD Dr. med.  
Alexandra Hess, Dr. med. Barbara Mikat-  
Drozdzyński, Dr. med. Andrea Schanz,  
Sonja Schu, Dr. rer. nat. Jens Hirchenhain,  
Dr. rer. nat. Dunja M. Baston-Büst  
Moorenstraße 5  
40225 Düsseldorf  
T: 0211-8104060, F: 0211-811-6787  
info@unikid.de  
www.unikid.de

pro-Kindwunsch – Kinderwunschzentrum  
Niederrhein  
Dr. med. Georg M. Döhmen, Dr. med. Thomas  
Schalk, Dr. rer. nat. Ezzaldin Alazzeh  
Von-Groote-Straße 175  
41066 Mönchengladbach  
T: 02161-49686-0, F: 02161-49686-19  
Melanchthonstraße 36  
47805 Krefeld  
T: 02151-150231-0, F: 02151-150231-1  
info@pro-kindwunsch.de  
www.pro-kindwunsch.de

green-ivf – Grevenbroicher Endokrinologie- &  
IVF-Zentrum  
Dr. med. Kerstin Friol, PD Dr. med. Christian  
Gnoth, Dr. med. Therese Skonieczny  
Rheydter Straße 143  
41515 Grevenbroich  
T: 02181-4915-13, F: 02181-4915-34  
praxis@green-ivf.de  
www.green-ivf.de

Bergisches Kinderwunschzentrum Remscheid  
Dr. med. Johannes Luckhaus, Dr. med. Anke  
Beerkotte  
Elberfelder Straße 49  
42853 Remscheid  
T: 02191-79192-0, F: 02191-79192-39  
mail@kinderwunsch-remscheid.de  
www.kinderwunsch-remscheid.de

Überörtliche Berufsausübungsgemeinschaft  
der Kinderwunschzentren Dortmund, Siegen,  
Dorsten GbR  
Prof. Dr. med. Stefan Dieterle, Dr. med. Andreas  
Neuer, Prof. Dr. med. Robert Greb, Dr. med.  
Katharina Möller-Morlang, Dr. med. Thomas  
von Ostrowski  
Olpe 19  
44135 Dortmund  
T: 0231-557545-0, F: 0231-55754599  
Hermelsbacher Weg 41  
57072 Siegen  
T: 0271-7701810, F: 0271-77018129  
Südwall 15  
46282 Dorsten  
T: 02362-27001, F: 02362-27002  
info@kinderwunschzentrum.org  
www.kinderwunschzentrum.org

novum – Zentrum für Reproduktionsmedizin  
Essen – Duisburg  
Prof. Dr. med. Thomas Katzorke, Dr. med.  
Susanne Wohlers, Najib N. R. Nassar, Dr. med.  
Sylvia Bartnitzki, Prof. Dr. med. Peter Bielfeld  
Akazienallee 8–12  
45127 Essen  
T: 0201-29429-0, F: 0201-29429-14  
Ärztforum in der Tonhallenpassage  
Friedrich-Wilhelm-Straße 71  
47051 Duisburg  
T: 0203-713958-0, F: 0203-713958-15  
info@ivfzentrum.de  
www.ivfzentrum.de

REProVita – Kinderwunschzentrum  
Recklinghausen  
Dr. med. Cordula Pitone  
Hertener Straße 29  
45657 Recklinghausen  
T: 02361-904188-0, F: 02361-904188-41  
info@reprovita.de  
www.reprovita.de

Kinderwunschpraxis Gelsenkirchen  
Dr. med. Ute Czeromin, Dr. med. Ina Walter-  
Göbel, Dr. med. Kathrin Fißeler  
Munscheidstraße 14  
45886 Gelsenkirchen  
T: 0209-167-1470, F: 0209-167-1471  
info@kinderwunsch-gelsenkirchen.de  
www.kinderwunsch-gelsenkirchen.de

FCM Fertility Center Münsterland  
Dr. med. Ulrich Hilland  
Crispinusstraße 12 (am Europaplatz)  
46399 Bocholt  
T: 02871-23943-43, F: 02871-23943-44  
praxis@fcm-net.de  
www.fcm-net.de

Kinderwunschpraxis an der Promenade  
Mempel & Stratmann  
Dr. med. Andrea Mempel, Susanne Stratmann,  
Dr. rer. nat. Melanie Rickert-Föhring  
Von-Vincke-Straße 14  
48143 Münster  
T: 0251-414312-0, F: 0251-414312-20  
willkommen@kinderwunsch-promenade.de  
www.kinderwunsch-promenade.de

MVZ Kinderwunsch- und Hormonzentrum  
Münster GmbH  
Dr. med. Dr. rer. nat. Lutz Belkien, Dr. med.  
Caroline Niehoff, Prof. Dr. med. Axel  
Kamischke, Dr. med. Juliane Burchard  
Hötteweg 5–7  
48143 Münster  
T: 0251-48267-0, F: 0251-48267-77  
info@ivf-muenster.de  
www.kinderwunschtherapie.de

UKM Kinderwunschzentrum Universitäts-  
klinikum Münster  
PD Dr. med. Andreas Schüring,  
Prof. Dr. med. Sabine Kliesch  
Albert-Schweitzer-Campus 1, Gebäude D11  
48149 Münster  
T: 0251-8358280, F: 0251-8348267  
info-kinderwunsch@ukmuenster.de  
www.kinderwunschzentrum.uk-muenster.de

Zentrum für Kinderwunschbehandlung  
Osnabrück/Nordhorn  
Irene Coordes, Dr. med. Manfred Schneider  
Rheiner Landstraße 93–95  
49078 Osnabrück  
Osnabrücker Straße 1  
48529 Nordhorn  
T: 0541-404500, F: 0541-4045040  
info@kinderwunsch123.de  
www.kinderwunsch123.de

GMP Frauenheilkunde & Reproduktions-  
medizin  
Dr. med. Dieter Struller, Dr. med. Christof  
Etien  
Graf-Salm-Straße 10  
50181 Bedburg, Erft  
T: 02272-7778, F: 02272-7773  
info@kinderwunsch-erft.de  
www.kinderwunsch-erft.de

MVZ PAN Institut für Endokrinologie und  
Reproduktionsmedizin  
Dr. med. Stefan Palm, Dr. med. Irene Pütz,  
Dr. med. Mirko Dannhof, PD Dr. med. Dolores  
Foth, Dipl. Psych. Anika Nöllgen, Dipl. Psych.  
Andrea Gilles, Dr. med. Georg Mansmann,  
PD Dr. med. Torsten Schmidt, Prof. Dr. med.  
Martina Breidenbach, Dr. med. Sigrid Gerards,  
Dr. med. Jürgen Laser, Dr. rer. nat. Bastian  
Schäferhoff, Dr. rer. nat. Maike Warnstedt,  
Dana Gonzalez M. B.  
Zeppelinstraße 1  
Neumarkt Galerie  
50667 Köln  
T: 0221-2776-229, F: 0221-2776-201  
repro@pan-klinik.de  
www.mvz-pan-institut.de

Klinik und Poliklinik für Frauenheilkunde  
und Geburtshilfe der Universität zu Köln  
Gynäkologische Endokrinologie und Repro-  
duktionsmedizin  
Prof. Dr. med. Peter Mallmann, PD Dr. med.  
Gohar Rahimi, Dr. rer. nat. Evgenia Isachenko  
Kerpener Straße 34  
50931 Köln  
T: 0221-478-87550, F: 0221-478-86201  
kinderwunsch-info@uk-koeln.de  
www.frauenklinik.uk-koeln.de/reproduktions-  
medizin-kryokonservierung

MVZ Amedes für IVF und Pränatalmedizin  
Dr. med. Markus Merzenich  
Schönhauser Straße 3  
50968 Köln  
T: 0221-340307-0, F: 0221-340307-77  
info@kinderwunschzentrum-koeln.de  
www.kinderwunschzentrum-koeln.de



Zentrum für Kinderwunschbehandlung Köln  
Eva Schwahn  
Schönhauser Straße 3  
50968 Köln  
T: 0221-3402280, F: 0221-3406017  
info@wunschkind-koeln.de  
www.wunschkind-koeln.de

Kinderwunschzentrum Aachen  
Dr. med. Klaus Grunwald  
Kasernenstraße 25  
52064 Aachen  
T: 0241-99774141, F: 0241-99774144  
kinderwunschzentrum@t-online.de  
www.kinderwunsch-aachen.de

Klinik für Gynäkologische Endokrinologie  
und Reproduktionsmedizin  
Uniklinik – RWTH Aachen  
Prof. Dr. med. Joseph Neulen,  
Dr. med. Benjamin Rösing  
Pauwelsstraße 30  
52074 Aachen  
T: 0241-8088971, F: 0241-8082518  
gyn-endokrinologie@ukaachen.de  
www.gyn-endokrinologie.ukaachen.de

Universitätsklinikum Bonn – Gynäkologische  
Endokrinologie und Reproduktionsmedizin  
Prof. Dr. med. Hans H. van der Ven,  
Prof. Dr. med. Katrin van der Ven, Dr. med.  
Ulrike Bohlen, Dr. med. Marietta Kühn,  
Dipl. hum. biol. Jana Liebenthron  
Sigmund-Freud-Straße 25  
53127 Bonn  
T: 0228-287-19186, F: 0228-28715795  
officerepro@ukb.uni-bonn.de  
www.kinderwunsch-uni-bonn.de

Praxisklinik für Gynäkologische Endokrinologie  
und Reproduktionsmedizin  
PD Dr. Dr. med. Gernot Paul Prietl, Dr. med.  
Monika Prietl, Dr. med. Peter Henschen  
Theaterplatz 18  
53177 Bonn-Bad Godesberg  
T: 0228-3503910, F: 0228-364892  
ivf@careme.de

Kinderwunsch Praxisklinik Trier  
Dr. med. Mohsen Satori, Prof. Dr. med. Jürgen  
P. Hanker  
Wissenschaftspark (WIP)  
Max-Planck-Straße 15  
54296 Trier  
T: 0651-97906-0, F: 0651-97906-20  
info@kinderwunsch-trier.de  
www.kinderwunsch-trier.de

Kinderwunsch Zentrum Mainz  
Dr. med. Robert Emig, Dr. med. Christine  
Molitor, Prof. Dr. med. Thomas Steck  
Fort Malakoff Park  
Rheinstraße 4  
55116 Mainz  
T: 06131-603020, F: 06131-6030210  
dr.emig@kwz-mz.de  
www.kinderwunschzentrum-mainz.de

Kinderwunschzentrum der Universitäts-  
medizin Mainz  
Prof. Dr. Rudolf Seufert M. Sc., Dr. Ruth  
Gomez, Dr. Ch. Haidner  
Langenbeckstraße 1  
55101 Mainz  
T: 06131-173929  
kinderwunsch@frauen.klinik.uni-mainz.de  
www.wunschkind-mainz.de

Kinderwunschzentrum Mittelrhein  
Dr. med. Josef Beran, Dr. med. Sebastian  
Hagelauer, Dr. med. Birgit Müller, Özgül  
Duman, Dr. Valentina Alupej  
Marktstraße 83  
56564 Neuwied  
Viktoriastraße 15  
56068 Koblenz  
T: 02631-3968-0, F: 02631-3968-29  
info@kinderwunsch-mittelrhein.de  
www.kinderwunsch-mittelrhein.de

repromedicum  
Kinderwunschzentrum  
Reproduktionsmedizin – Gyn. Endokrinologie  
Prof. Dr. med. Dr. med. habil. Ernst  
Siebzehnrübl, Dr. med. Anja Weidner  
Hanauer Landstraße 328–330  
60314 Frankfurt am Main  
T: 069-4260770, F: 069-42607710  
mail@repromedicum.de  
www.repromedicum.de

Kinderwunschzentrum Frankfurt  
Prof. Dr. med. Prof. h. c. Eberhard Merz,  
Dr. med. Marie-Theres Swayze, Ines Voß,  
Dr. Claas Mehnert  
Steinbacher Hohl 2–26, Haus 2  
60488 Frankfurt am Main  
T: 069-7601-3611, F: 069-76013321  
info@kinderwunschzentrum-frankfurt.de  
www.kinderwunschzentrumfrankfurt.de

Fertilitätszentrum und Gynäkologische Endo-  
krinologie – Klinik für Frauenheilkunde und  
Geburtshilfe  
Goethe-Universität  
Dr. med. Nicole Sänger, Dr. med. Annette  
Bachmann, Dr. Anna Michaelis  
Theodor-Stern-Kai 7  
60590 Frankfurt am Main  
T: 069-6301-5708, F: 069-6301-7120  
info.ivf@kgu.de  
www.kgu.de/zfg/gyn

Kinderwunsch- und Endometriosezentrum  
am Büsing Park  
Dr. med. Konstantin Manolopoulos, Dr. med.  
Birgit Lühr, Daniela Chemogo, Dr. med. Meral  
Gündüz  
Herrnstraße 51  
63065 Offenbach  
T: 069-80907571, F: 069-80907573  
info@offenbach-kinderwunsch.de  
www.offenbach-kinderwunsch.de

Kinderwunschzentrum Darmstadt  
Dr. med. Aysen Bilgicyildirim, Dr. med.  
Matthias Inacker, Prof. Dr. med. Gerhard  
Leyendecker  
Bratustraße 9  
64293 Darmstadt  
T: 06151-50098-0, F: 06151-50098500  
info@kwz-da.de  
www.kinderwunschzentrum-da.de

MVZ Kinderwunschzentrum Wiesbaden GmbH  
Dr. med. Martin Schorsch, Dr. med. Thomas  
Hahn, Dr. med. Geza Adasz, Karin Schilberz,  
Dr. med. Michael Amrani  
Mainzer Straße 98–102  
65189 Wiesbaden  
T: 0611-976320, F: 0611-9763210  
info@kinderwunschzentrum-wiesbaden.de  
www.kinderwunschzentrum-wiesbaden.de

Kinderwunsch-Praxis IVF-Saar Saarbrücken-  
Kaiserslautern  
Dr. med. Lars Happel, Andreas Giebel,  
Dr. med. Sascha Tauchert, Dr. med. Anette  
Russu, Dr. med. Marika Otte, Dr. rer. medic.  
Martin Greuner  
Europaallee 15  
66113 Saarbrücken  
T: 0681-93632-0, F: 0681-93632-10  
Maxstraße 13  
67659 Kaiserslautern  
T: 0631-70431, F: 0631-78568  
zentrum@ivf-saar.de  
www.ivf-saar.de

Klinik für Frauenheilkunde, Geburtshilfe  
und Reproduktionsmedizin – Universitäts-  
kliniken des Saarlandes  
Prof. Dr. med. E.-F. Solomayer, Dr. med. Peter  
Rosenbaum, Prof. Dr. Dr. M. E. Hammadeh,  
Dr. med. Kathrin Abel, Dr. med. Daniel  
Benndorf, Dr. med. Peter Jankowski,  
Dr. med. Simona Moga  
Kirrbergstraße 1  
66421 Homburg  
T: 06841-1628213, F: 06841-1628061  
ivf@uks.eu  
www.uniklinikum-saarland.de/einrichtungen/  
kliniken\_institute/frauenklinik/

Kinderwunschzentrum Ludwigshafen  
Dr. med. Tobias Schmidt, Dr. med. Elena  
Hartschuh, Dr. med. Claudia Schmidt,  
Dr. rer. nat. Nicole Hirschmann  
Ludwigstraße 54b  
67059 Ludwigshafen  
T: 0621-59298688, F: 0621-59298690  
kontakt@kinderwunsch-lu.de  
www.kinderwunschzentrum-ludwigshafen.de

Kinderwunschzentrum der Universitätsmedi-  
zin Mannheim  
Prof. Dr. med. Marc Sütterlin, Dr. med. Regine  
Schaffelder, Dr. med. Julia Rehnitz, Dr. med.  
Jade Mayer, Dr. sc. hum. Monika Gentili  
Theodor-Kutzer-Ufer 1–3  
68167 Mannheim  
T: 0621-383-3638, F: 0621-383-3814  
ivflabor@umm.de  
www.umm.de/64.0.html

Viernheimer Institut für Fertilität  
PD Dr. med. S. Volz-Köster, Dr. med. C. Nell  
Walter-Gropius-Allee 2  
68519 Viernheim  
T: 06204-918290, F: 06204-9182910  
info@vif-kinderwunsch.de  
www.vif-kinderwunsch.de

Kinderwunschzentrum Heidelberg  
Dr. med. Waltraud Parta-Kehry, Dr. sc. hum.  
Suat Parta, Friederike Tesarz, Dr. med. Daniela  
Seehaus, Dr. med. Christina Thöne  
Römerstraße 3  
69115 Heidelberg  
T: 06221-89300-0, F: 06221-89300-20  
info@kwz-hd.de  
www.kwz-hd.de

Abt. für Gynäkologische Endokrinologie und  
Fertilitätsstörungen – Universitätsklinikum  
Heidelberg  
Prof. Dr. med. Thomas Strowitzki, Prof. Dr.  
Bettina Toth, PD Dr. med. Ariane Germeyer,  
Dr. med. Sabine Rösner, Dr. med. Julia Rehnitz,  
Dr. med. Verena Holschbach, Dr. rer. nat. Inge  
Eberhardt, Dr. rer. nat. Jens Dietrich  
Im Neuenheimer Feld 440  
69120 Heidelberg  
T: 06221-567910, F: 06221-564099  
thomas.strowitzki@med.uni-heidelberg.de  
www.klinikum.uni-heidelberg.de/Kinder-  
wunschambulanz.583.0.html

Kinderwunsch-Zentrum Stuttgart  
Prof. Dr. med. Dieter H. A. Maas, Dr. med.  
Friedrich Gagsteiger, Dr. med. Klaus Bühler,  
Dr. med. Nina Kircher, Dr. med. Lisa Beiglböck,  
Dr. med. Gerhild Weiß  
Friedrichstraße 45  
70174 Stuttgart  
T: 0711-997806-0, F: 0711-997806-10  
info@kwz-stuttgart.de  
www.kidz-stuttgart.de

Kinderwunsch-Zentrum-Stuttgart, Praxis Villa  
Haag  
Dr. med. Dieter B. Mayer-Eichberger  
Herdweg 69  
70174 Stuttgart  
T: 0711-221084, F: 0711-221085  
info@kinderwunschpraxis.de  
www.kinderwunschpraxis.de

Kinderwunschzentrum Ludwigsburg  
Dr. med. Andreas Ott, Dr. med. Annette  
Schmid, Dr. med. Katja Becker  
Pflugfelder Straße 22  
71636 Ludwigsburg  
T: 07141-688760, F: 07141-688769  
info@kiwu-lb.de  
www.kinderwunschzentrum-ludwigsburg.com

KinderwunschPraxis Dres. Göhring  
Dr. med. Ulrich Göhring, Dr. med. Inés Göhring  
Hagellocher Weg 63  
72070 Tübingen  
T: 07071-94663-0, F: 07071-94663-99  
goehring@kinderwunschpraxis.com  
www.kinderwunschpraxis.com

IVF-Zentrum der Universitäts-Frauenklinik  
Tübingen  
Dr. med. Melanie Henes  
Calwerstraße 7  
72076 Tübingen  
T: 07071-2983117, F: 07071-292250  
melanie.henes@med.uni-tuebingen.de  
www.uni-frauenklinik-tuebingen.de

Kinderwunschzentrum Aalen  
Dr. med. Rainer Rau, Dr. med. Birgit Schröppel,  
Dr. rer. nat. Roland Eid  
Weidenfelder Straße 1  
73430 Aalen  
T: 07361-62021, F: 07361-62026  
info@kinderwunsch-aalen.de  
www.kinderwunsch-aalen.de

IVF-Zentrum Esslingen  
Praxis Dr. J. E. Costea  
Dr. med. Johann Emil Costea, Dipl.-Ing.  
Luminitza Costea, Dr. rer. nat. Michael Troge  
Martinstraße 15  
73728 Esslingen  
T: 0711-31059160, F: 0711-31059161  
info@ivf-praxis.com  
www.ivf-praxis.com

Centrum für Kinderwunsch Pforzheim  
Verena Peuten  
Zerrenner Straße 22–24  
75172 Pforzheim  
T: 07231-2808280, F: 07231-2808288  
info@kinderwunsch-pforzheim.de  
www.kinderwunsch-pforzheim.de

Kinderwunschzentrum Karlsruhe  
Arbeitsgemeinschaft für Fortpflanzungs-  
medizin  
Hans-Jürgen Gräber, Dr. med. Daniela Plathow,  
Dr. Frank Tetens, Laborärzte Dr. Ehrfeld &  
Kollegen, Humangenetik Dr. Schlüter  
Waldstraße 2  
76133 Karlsruhe  
T: 0721-8246700, F: 0721-82467090  
info@ivf-programm.de  
www.ivf-programm.de

Klinikum Mittelbaden  
Zentrum für Minimal Invasive Gynäkologie,  
Endometriose und Reproduktionsmedizin  
Prof. Dr. med. Wolfgang Küpker  
Engelstraße 39  
76437 Rastatt  
T: 07222-389-5400, F: 07222-389-65400  
info@kinderwunschzentrum-mittelbaden.de  
www.kinderwunschzentrum-mittelbaden.de

Kinderwunsch Bodensee  
Dr. med. Andreas Heine, Dr. med. Katja  
Drescher, Dr. Angela Panhans  
Maggistraße 5  
78224 Singen  
T: 07731-912999-0, F: 07731-912999-99  
info@endlichnachwuchs.de  
www.endlichnachwuchs.de

Centrum für gynäkologische Endokrinologie  
und Reproduktionsmedizin Freiburg (CERF)  
Dr. med. Rudolf Weitzell, Dr. med. Maria  
Thiemann, PD Dr. med. Birgit Wetzka,  
Prof. Dr. med. Franz Geisthövel,  
Dr. med. Veronika Wolk  
Bismarckallee 7f  
79098 Freiburg  
T: 0761-20743-0, F: 0761-32111  
info@kinderwunsch-hormone.de  
www.kinderwunsch-hormone.de

Universitätsklinikum Freiburg  
Klinik für Frauenheilkunde – Abteilung für  
Endokrinologie und Reproduktionsmedizin  
Dr. med. R. Schwab, Dr. rer. nat. B. Acar-Perk  
Hugstetter Straße 55  
79106 Freiburg  
T: 0761-270-31500, F: 0761-270-29120  
roxana.schwab@uniklinik-freiburg.de  
www.uniklinik-freiburg.de/frauenheilkunde/  
endokrinologie-und-reproduktionsmedizin.  
html

Reproduktionsmedizin München  
Medizinisches Versorgungszentrum  
Partnerschaftsgesellschaft  
Dr. med. Walter Bollmann, Dr. med. Thomas  
Brückner, Dr. med. Ulrich Noss, Dr. med.  
Daniel Noss, PD Dr. med. Robert Ochsenkühn,  
Dr. med. Barbara Wiedemann  
Ärzte für Laboratoriumsmedizin Dr. med.  
Gerhard Noss, Risto Gjavotchanoff  
Tal 11  
80331 München  
T: 089-242295-0, F: 089-242295-60  
info@ivf-bbn.de  
www.ivf-bbn.de

kiz) kinderwunsch im zentrum  
Praxis für gynäkologische Endokrinologie und  
Reproduktionsmedizin  
PD Dr. med. Roxana Popovici, Dr. med. Anja  
Kuhlmann  
Bayerstraße 3  
80335 München  
T: 089-4522178-0, F: 089-4522178-45  
info@kiiz.de  
www.kiiz.de

Zentrum für Gynäkologische Endokrinologie  
und Reproduktionsmedizin  
Klinikum der LMU München-Innenstadt  
Prof. Dr. med. Christian J. Thaler, Dr. med. Nina  
Rogenhofer, Dr. Panos Papadopoulos Ph. D.,  
Prof. Dr. med. Klaus Friese  
Maistraße 11  
80337 München  
T: 089-4400-54214, F: 089-4400-54918  
www.kinderwunsch-uni-muenchen.de

Kinderwunsch Zentrum an der Oper  
Dr. med. Helmut Lacher, Dr. med. Jörg Puchta,  
PD Dr. med. Hans-Ulrich Pauer, Dr. med. Silke  
Michna  
Maximilianstraße 2a  
80539 München  
T: 089-547041-0, F: 089-547041-34  
info@hormonzentrum.de  
www.hormonzentrum.de

Kinderwunsch Centrum München (MVZ)  
Dr. med. Klaus Fiedler, Dr. med. Gottfried  
Krüsmann, Prof. Dr. Dr. med. habil. Wolfgang  
Würfel, Dr. med. Irene von Hertwig, Dr. med.  
Jan Krüsmann, Ina Laubert, Osama Meri,  
Dr. med. Claudia Santjohanser, Sabine Völker  
Lortzingstraße 26  
81241 München  
T: 089-244144-0, F: 089-244144-42  
info@ivf-muenchen.de  
www.ivf-muenchen.de

Hormon- und Kinderwunschzentrum  
Klinikum der LMU München-Grosshadern  
Prof. Dr. med. Christian J. Thaler, Prof. Dr. med.  
Klaus Friese, Dr. rer. nat. Viktoria von  
Schönfeldt  
Marchioninistraße 15  
81377 München  
T: 089-4400-76825, F: 089-4400-73844  
www.kinderwunsch-uni-muenchen.de

GMP Frauenärzte Prof. Berg, Dr. Lesoine  
Reproduktionsmedizin in Bogenhausen  
Prof. Dr. med. Dieter Berg, Dr. med. Bernd  
Lesoine  
Prinzregentenstraße 69  
81675 München  
T: 089-414240-0, F: 089-414240-11  
info@ivf-muenchen.com  
www.ivf-muenchen.com

Kinderwunsch Centrum Chiemsee  
Dr. med. Susann Böhm, Dr. med. Angelika  
Stachl  
Hochriesstraße 21  
83209 Prien am Chiemsee  
T: 08051-5050, F: 08051-63499  
info@kinderwunsch-chiemsee.de  
www.kinderwunsch-chiemsee.de

IVF-Zentrum Augsburg  
GMP Dres. Hiller, Bauer, Kraus, Steinfeld-  
Birg  
Dr. med. Klaus-Friedrich Hiller, Dr. med.  
Thomas Bauer, Dr. med. Harald Kraus,  
Dr. med. Dieter Steinfeld-Birg  
Prinzregentenstraße 25  
86150 Augsburg  
T: 0821-502780, F: 0821-5027878  
info@ivf-augsburg.de  
www.ivf-augsburg.de

KinderWunschKempten (KWK)  
Zentrum für Reproduktionsmedizin am  
Klinikum Kempten  
Prof. Dr. med. Ricardo Felberbaum, Dr. med.  
Anke Brössner, Dr. med. Elisabeth Büchele,  
Dipl. Biol. Mohammad Kousehlar  
Robert-Weixler-Straße 50  
87439 Kempten  
T: 0831-530-3380, F: 0831-530-3378  
kinderwunsch@klinikum-kempten.de  
www.kinderwunsch-kempten.de

Praxisklinik Frauenstraße Ulm  
Prof. Dr. med. Karl Sterzik, Dr. med. Erwin  
Strehler, Prof. Dr. med. Wolfgang Hütter  
Frauenstraße 51  
89073 Ulm  
T: 0731-966510, F: 0731-9665130  
info@kinderwunsch-ulm.de  
www.kinderwunsch-ulm.de

Universitätsfrauenklinik und Poliklinik Ulm  
Zentrum für Reproduktionsmedizin und  
Gynäkologische Endokrinologie  
PD Dr. med. Katharina Hancke  
Prittwitzstraße 43  
89075 Ulm  
T: 0731-50058663, F: 0731-50058664  
repromed.ufk@uniklinik-ulm.de  
www.uni-ulm.de/ivf

Kinderwunsch-Zentrum Ulm  
Dr. med. Friedrich Gagsteiger, Dr. med.  
Natalie Reeka, Dr. med. Kerstin Eibner,  
Dr. med. Nilofar Huzurudin, Dr. med. Verena  
Domschat, Julia Koglin  
Einsteinstraße 59  
89077 Ulm  
T: 0731-151590, F: 0731-1515915  
info@kwz-ulm.de  
www.kwz-ulm.de

Kinderwunsch und Frauen-Hormon Centrum  
Nürnberg  
Dr. med. Joachim Neuwinger, Dr. med.  
Barbara Munzer-Neuwinger, Prof. Dr. med.  
Peter Licht  
Agnesgasse 2–4  
90403 Nürnberg  
T: 0911-2355500, F: 0911-2355516  
aerzte@kinderwunschzentrum-nuernberg.de  
www.kinderwunschzentrum-nuernberg.de

GMP Dres. Hamori, Behrens, Hammel  
Dr. med. Miklos Hamori, Dr. med. Rolf  
Behrens, Dr. med. Andreas Hammel  
Nürnberger Straße 35  
91052 Erlangen  
T: 09131-89520, F: 09131-205410  
info@ivf-erlangen.de  
www.ivf-erlangen.de

Kinderwunschzentrum Erlangen  
Dr. med. Jan van Uem, Dr. med. Madeleine  
Haas  
Michael-Vogel-Straße 1e  
91052 Erlangen  
T: 09131-8095-0, F: 09131-8095-30  
info@kinderwunschzentrum-erlangen.de  
www.kinderwunschzentrum-erlangen.de

Universitäts-Fortpflanzungszentrum Franken  
(UFF)  
Prof. Dr. Matthias W. Beckmann, PD Dr.  
Susanne Cupisti, Prof. Dr. Ralf Dittrich,  
PD Dr. Stefan P. Renner, MBA  
Universitätsstraße 21–23  
91054 Erlangen  
T: 09131-85-33553, F: 09131-85-33456  
fk-uff@uk-erlangen.de  
www.reproduktionsmedizin.uk-erlangen.de

Kinderwunschzentrum Amberg  
Am Klinikum St. Marien Amberg  
Dr. med. Jürgen Krieg  
Mariahilfbergweg 7  
92224 Amberg  
T: 09621-381519, F: 09621-381941  
info@dr-krieg.de  
www.kinderwunsch-amberg.de

KITZ Regensburg – KinderwunschTherapie  
im Zentrum  
Prof. Dr. med. Bernd Seifert, Dr. med. Claudia  
Gaßner  
Hemauerstraße 1  
93047 Regensburg  
T: 0941-992577-0, F: 0941-992577-23  
info@kitz-regensburg.de  
www.kitz-regensburg.de

Kinderwunschzentrum profertilita  
Prof. Dr. med. Monika Bals-Pratsch, M. Sc.,  
Dr. med. Angelika Eder, M. Sc.  
Hildegard-von-Bingen-Straße 1  
93047 Regensburg  
T: 0941-89849944, F: 0941-89849945  
sekretariat@profertilita.de  
www.profertilita.de

Kinderwunschzentrum Niederbayern  
Dr. med. Hans-Joachim Kroiss, Dr. med.  
Samuel Dadze, Dr. IM Tem. Elfriede  
Bernhardt  
Stadtfeldstraße 50  
94469 Deggendorf  
T: 0991-29799332, F: 0991-29799331  
praxis@ivf-bayern.de, dr.kroiss@ivf-bayern.de  
www.kinderwunsch-niederbayern.de

Klinik am Hofgarten – Kinderwunsch-Zentrum  
Bayreuth  
Dr. med. Dr. phil. Stefan Todorow,  
Dr. med. Erika Schwarz  
Richard-Wagner-Straße 34–36  
95444 Bayreuth  
T: 0921-7454440, F: 0921-74544410  
info@ivf-bayreuth.de  
www.ivf-bayreuth.de

Zentrum für Reproduktionsmedizin, Medizinische  
Genetik und Pränataldiagnostik  
Dr. med. Reinhard Mai, Dr. med. Wolfgang  
Schmitt, Dr. med. Lore Mulfinger  
Juliuspromenade 7  
97070 Würzburg  
T: 0931-321230, F: 0931-3212377  
kontakt@drs-mai-schmitt-mulfinger.de  
www.drs-mai-schmitt-mulfinger.de

Universitätsklinikum Würzburg  
Frauenklinik und Hebammenschule  
Zentrum für gynäkologische Endokrinologie  
und Reproduktionsmedizin  
Prof. Dr. med. Ursula Zollner, Dr. med.  
Michael Schwab, Dr. rer. nat. Claudia Staib  
Josef-Schneider-Straße 4  
97080 Würzburg  
T: 0931-201-25619, F: 0931-201-25406  
kinderwunsch@klinik.uni-wuerzburg.de  
www.frauenklinik.uni-wuerzburg.de

## Sponsors

**Without generous support, publishing this Annual would not have been possible.  
Our gratitude goes to:**

### **FERRING Arzneimittel GmbH, Kiel**

www.ferring.de  
4,500 EUR



### **Merck Serono GmbH, Darmstadt**

www.merckserono.de  
4,500 EUR



### **MSD Sharp & Dohme GmbH, Haar bei München**

www.msd.de  
4,500 EUR





## NEUES AUS DEM VERLAG

### e-journal-Abo

Beziehen Sie die elektronischen Ausgaben dieser Zeitschrift hier.  
Die Lieferung umfasst 4–5 Ausgaben pro Jahr zzgl. allfälliger Sonderhefte.  
Unsere e-Journale stehen als PDF-Datei zur Verfügung und sind auf den meisten der marktüblichen e-Book-Readern, Tablets sowie auf iPad funktionsfähig.

➔  [Bestellung e-Journal-Abo](#)

Besuchen Sie unsere **zeitschriftenübergreifende Datenbank**

➔  [Bilddatenbank](#)

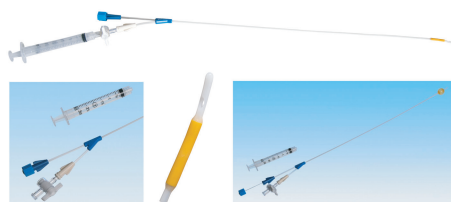
➔  [Artikeldatenbank](#)

➔  [Fallberichte](#)

Besuchen Sie unsere Rubrik  [Medizintechnik-Produkte](#)



Philips Clear Vue  
650 Mides GmbH



Hystero-Salpingographie-Katheter-Set  
Labotect GmbH



Oosafe+Labwipes  
Gynemed GmbH



MediTEX IVF  
Critex GmbH



Vagiwell  
Gynial GmbH



K-Systems G210 InviCell  
Flachbett-Inkubator  
MTG Medical



SAFE Sens  
Origio GmbH